

DATASHEET

AP2 gamma Rabbit Polyclonal Antibody

CAT. NO. APA08717

KEY FEATURES

Target	AP2 gamma	Source / Host	Rabbit
Reactivity	Human, Mouse, Rat, Monkey	Clonality	Polyclonal
Applications	WB, IHC	Conjugation	Unconjugated
Form / Buffer	Liquid in 0.42% Potassium phosphate, 0.87% Sodium chloride, pH 7.3, 30% glycerol, and 0.01% sodium azide.		Storage at -20°C

BACKGROUND

Sequence-specific DNA-binding transcription factor that interacts with cellular enhancer elements to regulate transcription of selected genes, and which plays a key role in early embryonic development . AP-2 factors bind to the consensus sequence 5'-GCCNNNGGC-3' and activate genes involved in a large spectrum of important biological functions . TFAP2C plays a key role in early embryonic development by regulating both inner cell mass (ICM) and trophoblast differentiation . At the 8-cell stage, during morula development, controls expression of cell-polarity genes . Upon trophoblast commitment, binds to late trophoblast genes in blastocysts together with CDX2, and later to extra-embryonic ectoderm genes together with SOX2 .

APPLICATION

To ensure optimal assay performance, AREX recommends conducting reagent titration tailored to each testing system for optimal detection results.

WB	1:500 - 1:1000
IHC	1:100 - 1:200

*Results are sample-specific. Please refer to your local assay conditions and test parameters for reference.

PRODUCT OVERVIEW

Description	Rabbit polyclonal antibody to AP2 gamma
Specificity	Recognizes endogenous levels of AP2 gamma protein.
Antibody Type	Primary antibody
Immunogen	KLH-conjugated synthetic peptide encompassing a sequence within the C-term region of human AP2 gamma. The exact sequence is proprietary.
Purification	The antibody was purified by immunogen affinity chromatography.
Molecular Weight	Predicted: 49 kD; Observed: 49 kD
Form/Buffer	Liquid in 0.42% Potassium phosphate, 0.87% Sodium chloride, pH 7.3, 30% glycerol, and 0.01% sodium azide.
Alternative Names	Transcription factor AP-2 gamma; AP2-gamma; Activating enhancer-binding protein 2 gamma; Transcription factor ERF-1
Gene Symbol	TFAP2C
Entrez Gene	7022(Human); 21420(Mouse)
SwissProt	Q92754(Human); Q61312(Mouse)

*AREX continuously optimizes our products. Webpage content may not reflect the latest updates. For inquiries, please contact info@arexbio.com or your local distributor.

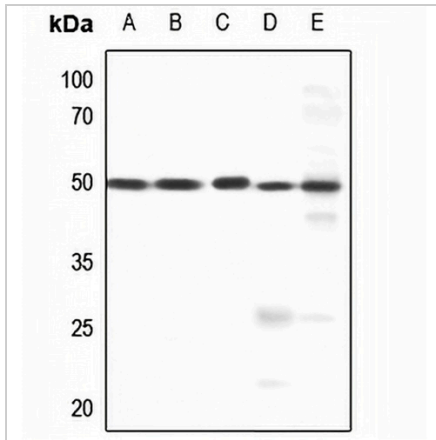
*Clone Number, Reactivity, Source/Host and Clonality can be found in the product name and Key Features section above.

DATASHEET

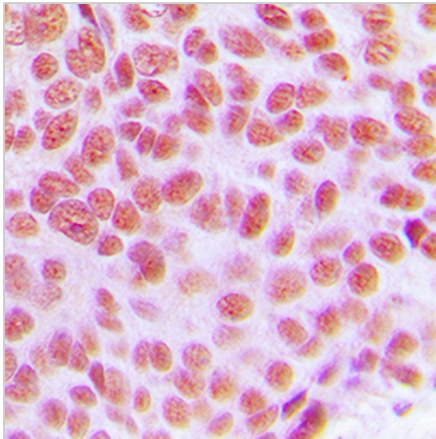
AP2 gamma Rabbit Polyclonal Antibody

CAT. NO. APA08717

DATA



Western blot analysis of AP2 gamma expression in HEK293T (A), HeLa (B), H1688 (C), rat kidney (D), rat lung (E) whole cell lysates. (Predicted band size: 49 kD; Observed band size: 49 kD)



Immunohistochemical analysis of AP2 gamma staining in human breast cancer formalin fixed paraffin embedded tissue section. The section was pre-treated using heat mediated antigen retrieval with sodium citrate buffer (pH 6.0). The section was then incubated with the antibody at room temperature and detected using an HRP conjugated compact polymer system. DAB was used as the chromogen. The section was then counterstained with haematoxylin and mounted with DPX.

STORAGE

Store at 4°C short term. For long term storage, store at -20°C, avoiding freeze/thaw cycles.

NOTE

For Research Use Only. Not for diagnostic, therapeutics, prophylactic or in vivo use.