

## DATASHEET

# ZEB2 Rabbit Polyclonal Antibody

CAT. NO. APA08754

### KEY FEATURES

Target	ZEB2	Source / Host	Rabbit
Reactivity	Human, Mouse	Clonality	Polyclonal
Applications	WB, IHC	Conjugation	Unconjugated
Form / Buffer	Liquid in 0.42% Potassium phosphate, 0.87% Sodium chloride, pH 7.3, 30% glycerol, and 0.01% sodium azide.		Storage at -20°C

### BACKGROUND

Transcriptional inhibitor that binds to DNA sequence 5'-CACCT-3' in different promoters . Represses transcription of E-cadherin . Represses expression of MEOX2 .

### APPLICATION

To ensure optimal assay performance, AREX recommends conducting reagent titration tailored to each testing system for optimal detection results.

WB	1:500 - 1:1000
IHC	1:100 - 1:200

\*Results are sample-specific. Please refer to your local assay conditions and test parameters for reference.

### PRODUCT OVERVIEW

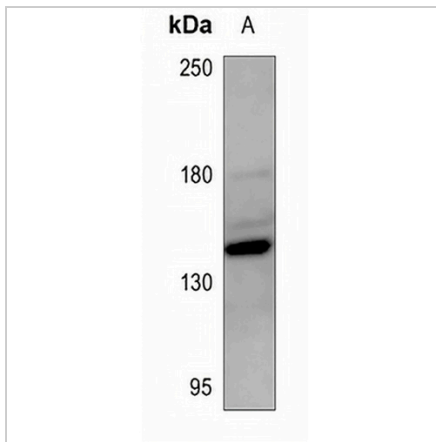
Description	Rabbit polyclonal antibody to ZEB2
Specificity	Recognizes endogenous levels of ZEB2 protein.
Antibody Type	Primary antibody
Immunogen	KLH-conjugated synthetic peptide encompassing a sequence within the N-term region of human ZEB2. The exact sequence is proprietary.
Purification	The antibody was purified by immunogen affinity chromatography.
Molecular Weight	Predicted: 136 kD; Observed: 136 kD
Form/Buffer	Liquid in 0.42% Potassium phosphate, 0.87% Sodium chloride, pH 7.3, 30% glycerol, and 0.01% sodium azide.
Alternative Names	KIAA0569; SIP1; ZFH1B; ZFX1B; Zinc finger E-box-binding homeobox 2; Smad-interacting protein 1; SMADIP1; Zinc finger homeobox protein 1b
Gene Symbol	ZEB2
Entrez Gene	9839(Human)
SwissProt	O60315(Human)

\*AREX continuously optimizes our products. Webpage content may not reflect the latest updates. For inquiries, please contact [info@arexbio.com](mailto:info@arexbio.com) or your local distributor.

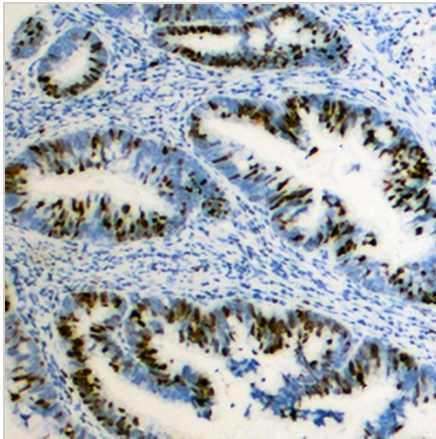
\*Clone Number, Reactivity, Source/Host and Clonality can be found in the product name and Key Features section above.

**DATASHEET****ZEB2 Rabbit Polyclonal Antibody**

CAT. NO. APA08754

**DATA**

Western blot analysis of ZEB2 expression in mouse liver (A) whole cell lysates. (Predicted band size: 136 kD; Observed band size: 136 kD)



Immunohistochemical analysis of ZEB2 staining in human colon cancer formalin fixed paraffin embedded tissue section. The section was pre-treated using heat mediated antigen retrieval with sodium citrate buffer (pH 6.0). The section was then incubated with the antibody at room temperature and detected using an HRP conjugated compact polymer system. DAB was used as the chromogen. The section was then counterstained with haematoxylin and mounted with DPX.

**STORAGE**

Store at 4°C short term. For long term storage, store at -20°C, avoiding freeze/thaw cycles.

**NOTE**

For Research Use Only. Not for diagnostic, therapeutics, prophylactic or in vivo use.