

DATASHEET

Kanadaptin Rabbit Polyclonal Antibody

CAT. NO. APA08773

KEY FEATURES

Target	Kanadaptin	Source / Host	Rabbit
Reactivity	Human, Mouse, Rat, Monkey	Clonality	Polyclonal
Applications	WB, IHC, IF/ICC	Conjugation	Unconjugated
Form / Buffer	Liquid in 0.42% Potassium phosphate, 0.87% Sodium chloride, pH 7.3, 30% glycerol, and 0.01% sodium azide.		Storage at -20°C

BACKGROUND

Kanadaptin (SLC4A1AP), also known as Human lung cancer oncogene 3 protein, HLC-3, Kidney anion exchanger adapter protein. Subcellular location: Nucleus; Cytoplasm Tissue specificity: Ubiquitously expressed

APPLICATION

To ensure optimal assay performance, AREX recommends conducting reagent titration tailored to each testing system for optimal detection results.

WB	1:500 - 1:1000
IHC	1:100 - 1:200
IF/ICC	1:100 - 1:500

*Results are sample-specific. Please refer to your local assay conditions and test parameters for reference.

PRODUCT OVERVIEW

Description	Rabbit polyclonal antibody to Kanadaptin
Specificity	Recognizes endogenous levels of Kanadaptin protein.
Antibody Type	Primary antibody
Immunogen	KLH-conjugated synthetic peptide encompassing a sequence within the center region of human Kanadaptin. The exact sequence is proprietary.
Purification	The antibody was purified by immunogen affinity chromatography.
Molecular Weight	Predicted: 88 kD; Observed: 89 kD
Form/Buffer	Liquid in 0.42% Potassium phosphate, 0.87% Sodium chloride, pH 7.3, 30% glycerol, and 0.01% sodium azide.
Alternative Names	Kanadaptin; Human lung cancer oncogene 3 protein; HLC-3; Kidney anion exchanger adapter protein; Solute carrier family 4 anion exchanger member 1 adapter protein
Gene Symbol	SLC4A1AP
Entrez Gene	22950(Human)
SwissProt	Q9BWU0(Human)

*AREX continuously optimizes our products. Webpage content may not reflect the latest updates. For inquiries, please contact info@arexbio.com or your local distributor.

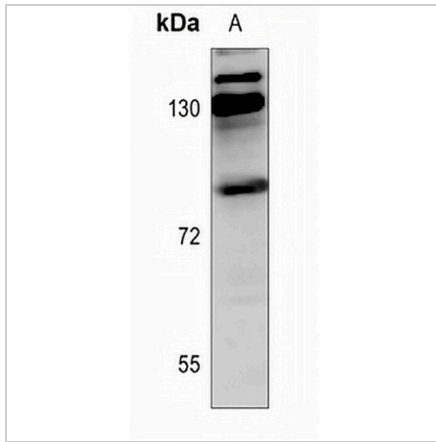
*Clone Number, Reactivity, Source/Host and Clonality can be found in the product name and Key Features section above.

DATASHEET

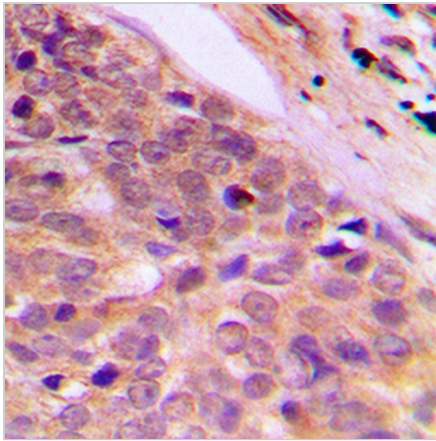
Kanadaptin Rabbit Polyclonal Antibody

CAT. NO. APA08773

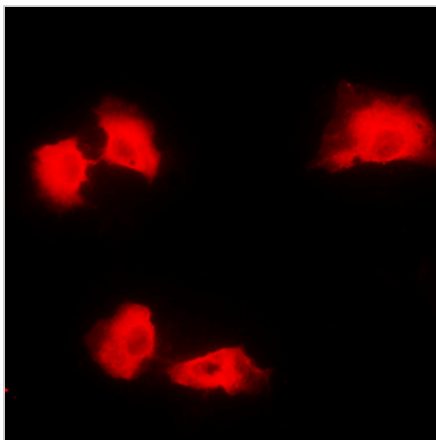
DATA



Western blot analysis of Kanadaptin expression in mouse testis (A) whole cell lysates. (Predicted band size: 88 kD; Observed band size: 89 kD)



Immunohistochemical analysis of Kanadaptin staining in human breast cancer formalin fixed paraffin embedded tissue section. The section was pre-treated using heat mediated antigen retrieval with sodium citrate buffer (pH 6.0). The section was then incubated with the antibody at room temperature and detected using an HRP conjugated compact polymer system. DAB was used as the chromogen. The section was then counterstained with haematoxylin and mounted with DPX.



Immunofluorescent analysis of Kanadaptin staining in A431 cells. Formalin-fixed cells were permeabilized with 0.1% Triton X-100 in TBS for 5-10 minutes and blocked with 3% BSA-PBS for 30 minutes at room temperature. Cells were probed with the primary antibody in 3% BSA-PBS and incubated overnight at 4 °C in a humidified chamber. Cells were washed with PBST and incubated with a DyLight 594-conjugated secondary antibody (red) in PBS at room temperature in the dark.

STORAGE

Store at 4°C short term. For long term storage, store at -20°C, avoiding freeze/thaw cycles.

NOTE

For Research Use Only. Not for diagnostic, therapeutics, prophylactic or in vivo use.