

DATASHEET

ARFIP1 Rabbit Polyclonal Antibody

CAT. NO. APA08782

KEY FEATURES

Target	ARFIP1	Source / Host	Rabbit
Reactivity	Human, Mouse, Rat, Bovine	Clonality	Polyclonal
Applications	WB, IHC, IF/ICC	Conjugation	Unconjugated
Form / Buffer	Liquid in 0.42% Potassium phosphate, 0.87% Sodium chloride, pH 7.3, 30% glycerol, and 0.01% sodium azide.		Storage at -20°C

BACKGROUND

Plays a role in controlling biogenesis of secretory granules at the trans-Golgi network . Mechanistically, binds ARF-GTP at the neck of a growing secretory granule precursor and forms a protective scaffold . Once the granule precursor has been completely loaded, active PRKD1 phosphorylates ARFIP1 and releases it from ARFs . In turn, ARFs induce fission . Through this mechanism, ensures proper secretory granule formation at the Golgi of pancreatic beta cells .

APPLICATION

To ensure optimal assay performance, AREX recommends conducting reagent titration tailored to each testing system for optimal detection results.

WB	1:500 - 1:1000
IHC	1:100 - 1:200
IF/ICC	1:100 - 1:500

*Results are sample-specific. Please refer to your local assay conditions and test parameters for reference.

PRODUCT OVERVIEW

Description	Rabbit polyclonal antibody to ARFIP1
Specificity	Recognizes endogenous levels of ARFIP1 protein.
Antibody Type	Primary antibody
Immunogen	KLH-conjugated synthetic peptide encompassing a sequence within the C-term region of human ARFIP1. The exact sequence is proprietary.
Purification	The antibody was purified by immunogen affinity chromatography.
Molecular Weight	Predicted: 41 kD; Observed: 42 kD
Form/Buffer	Liquid in 0.42% Potassium phosphate, 0.87% Sodium chloride, pH 7.3, 30% glycerol, and 0.01% sodium azide.
Alternative Names	Arfaptin-1; ADP-ribosylation factor-interacting protein 1
Gene Symbol	ARFIP1
Entrez Gene	27236(Human); 60382(Rat)
SwissProt	P53367(Human); Q9JHU5(Rat)

*AREX continuously optimizes our products. Webpage content may not reflect the latest updates. For inquiries, please contact info@arexbio.com or your local distributor.

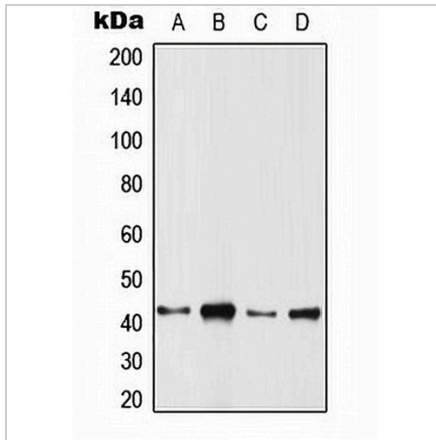
*Clone Number, Reactivity, Source/Host and Clonality can be found in the product name and Key Features section above.

DATASHEET

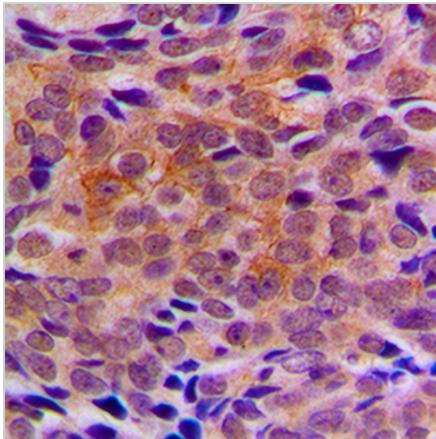
ARFIP1 Rabbit Polyclonal Antibody

CAT. NO. APA08782

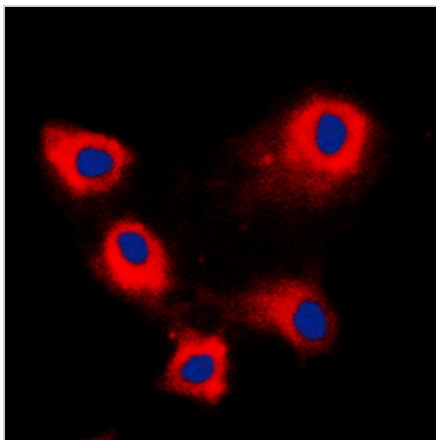
DATA



Western blot analysis of ARFIP1 expression in HeLa (A), SP2/0 (B), PC12 (C), rat muscle (D) whole cell lysates. (Predicted band size: 41 kD; Observed band size: 42 kD)



Immunohistochemical analysis of ARFIP1 staining in human breast cancer formalin fixed paraffin embedded tissue section. The section was pre-treated using heat mediated antigen retrieval with sodium citrate buffer (pH 6.0). The section was then incubated with the antibody at room temperature and detected using an HRP conjugated compact polymer system. DAB was used as the chromogen. The section was then counterstained with haematoxylin and mounted with DPX.



Immunofluorescent analysis of ARFIP1 staining in HeLa cells. Formalin-fixed cells were permeabilized with 0.1% Triton X-100 in TBS for 5-10 minutes and blocked with 3% BSA-PBS for 30 minutes at room temperature. Cells were probed with the primary antibody in 3% BSA-PBS and incubated overnight at 4 °C in a humidified chamber. Cells were washed with PBST and incubated with a DyLight 594-conjugated secondary antibody (red) in PBS at room temperature in the dark. DAPI was used to stain the cell nuclei (blue).

STORAGE

Store at 4°C short term. For long term storage, store at -20°C, avoiding freeze/thaw cycles.

NOTE

For Research Use Only. Not for diagnostic, therapeutics, prophylactic or in vivo use.