

**DATASHEET**

**NSG2 Rabbit Polyclonal Antibody**

CAT. NO. APA08789

**KEY FEATURES**

Target	NSG2	Source / Host	Rabbit
Reactivity	Human, Bovine, Monkey	Clonality	Polyclonal
Applications	WB, IHC	Conjugation	Unconjugated
Form / Buffer	Liquid in 0.42% Potassium phosphate, 0.87% Sodium chloride, pH 7.3, 30% glycerol, and 0.01% sodium azide.		Storage at-20°C

**BACKGROUND**

Neuronal vesicle trafficking-associated protein 2 (NSG2), also known as Neuron-specific protein family member 2, Protein p19, Hmp19. Belongs to the NSG family Subcellular location: Membrane; Golgi apparatus, trans-Golgi network membrane; Cell projection, dendrite; Endosome membrane; Early endosome membrane; Late endosome membrane; Lysosome lumen; Cytoplasmic vesicle membrane; Golgi apparatus, Golgi stack membrane; Endosome, multivesicular body membrane

**APPLICATION**

To ensure optimal assay performance, AREX recommends conducting reagent titration tailored to each testing system for optimal detection results.

WB	1:500 - 1:1000
IHC	1:100 - 1:200

\*Results are sample-specific. Please refer to your local assay conditions and test parameters for reference.

**PRODUCT OVERVIEW**

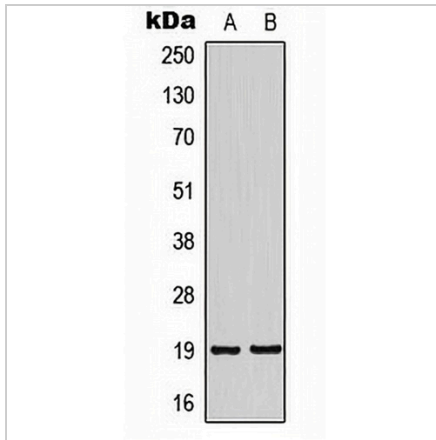
Description	Rabbit polyclonal antibody to NSG2
Specificity	Recognizes endogenous levels of NSG2 protein.
Antibody Type	Primary antibody
Immunogen	KLH-conjugated synthetic peptide encompassing a sequence within the center region of human NSG2. The exact sequence is proprietary.
Purification	The antibody was purified by immunogen affinity chromatography.
Molecular Weight	Predicted: 19 kD; Observed: 19 kD
Form/Buffer	Liquid in 0.42% Potassium phosphate, 0.87% Sodium chloride, pH 7.3, 30% glycerol, and 0.01% sodium azide.
Alternative Names	Neuron-specific protein family member 2; Protein p19; Hmp19
Gene Symbol	NSG2
Entrez Gene	51617(Human)
SwissProt	Q9Y328(Human)

\*AREX continuously optimizes our products. Webpage content may not reflect the latest updates. For inquiries, please contact [info@arexbio.com](mailto:info@arexbio.com) or your local distributor.

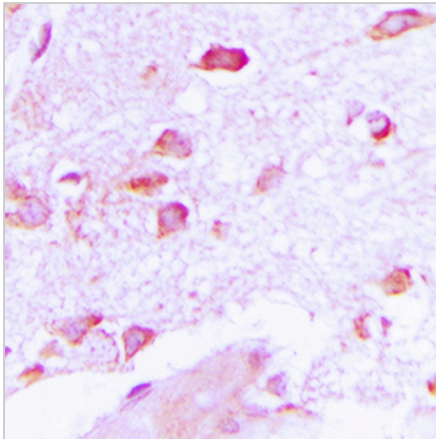
\*Clone Number, Reactivity, Source/Host and Clonality can be found in the product name and Key Features section above.

**DATASHEET****NSG2 Rabbit Polyclonal Antibody**

CAT. NO. APA08789

**DATA**

Western blot analysis of NSG2 expression in SHSY5Y (A), HeLa (B) whole cell lysates.  
(Predicted band size: 19 kD; Observed band size: 19 kD)



Immunohistochemical analysis of NSG2 staining in human brain formalin fixed paraffin embedded tissue section. The section was pre-treated using heat mediated antigen retrieval with sodium citrate buffer (pH 6.0). The section was then incubated with the antibody at room temperature and detected using an HRP conjugated compact polymer system. DAB was used as the chromogen. The section was then counterstained with haematoxylin and mounted with DPX.

**STORAGE**

Store at 4°C short term. For long term storage, store at -20°C, avoiding freeze/thaw cycles.

**NOTE**

For Research Use Only. Not for diagnostic, therapeutics, prophylactic or in vivo use.