

DATASHEET

MOV10L1 Rabbit Polyclonal Antibody

CAT. NO. APA08792

KEY FEATURES

Target	MOV10L1	Source / Host	Rabbit
Reactivity	Human, Mouse, Rat	Clonality	Polyclonal
Applications	WB, IHC	Conjugation	Unconjugated
Form / Buffer	Liquid in 0.42% Potassium phosphate, 0.87% Sodium chloride, pH 7.3, 30% glycerol, and 0.01% sodium azide.		Storage at -20°C

BACKGROUND

ATP-dependent RNA helicase required during spermatogenesis to repress transposable elements and prevent their mobilization, which is essential for germline integrity. Acts via the piRNA metabolic process, which mediates the repression of transposable elements during meiosis by forming complexes composed of piRNAs and Piwi proteins and governs the methylation and subsequent repression of transposons. Involved in the primary piRNA metabolic process. Specifically binds to piRNA precursors and promotes the generation of intermediate piRNA processing fragments that are subsequently loaded to Piwi proteins.

APPLICATION

To ensure optimal assay performance, AREX recommends conducting reagent titration tailored to each testing system for optimal detection results.

WB	1:500 - 1:1000
IHC	1:100 - 1:200

*Results are sample-specific. Please refer to your local assay conditions and test parameters for reference.

PRODUCT OVERVIEW

Description	Rabbit polyclonal antibody to MOV10L1
Specificity	Recognizes endogenous levels of MOV10L1 protein.
Antibody Type	Primary antibody
Immunogen	KLH-conjugated synthetic peptide encompassing a sequence within the center region of human MOV10L1. The exact sequence is proprietary.
Purification	The antibody was purified by immunogen affinity chromatography.
Molecular Weight	Predicted: 135 kD; Observed: 135 kD
Form/Buffer	Liquid in 0.42% Potassium phosphate, 0.87% Sodium chloride, pH 7.3, 30% glycerol, and 0.01% sodium azide.
Alternative Names	Putative helicase Mov10l1; Moloney leukemia virus 10-like protein 1; MOV10-like protein 1
Gene Symbol	MOV10L1
Entrez Gene	54456(Human); 83456(Mouse)
SwissProt	Q9BXT6(Human); Q99MV5(Mouse)

*AREX continuously optimizes our products. Webpage content may not reflect the latest updates. For inquiries, please contact info@arexbio.com or your local distributor.

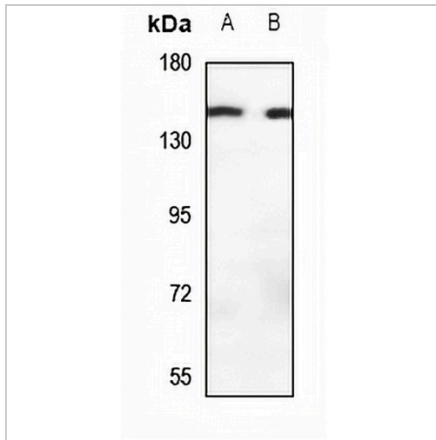
*Clone Number, Reactivity, Source/Host and Clonality can be found in the product name and Key Features section above.

DATASHEET

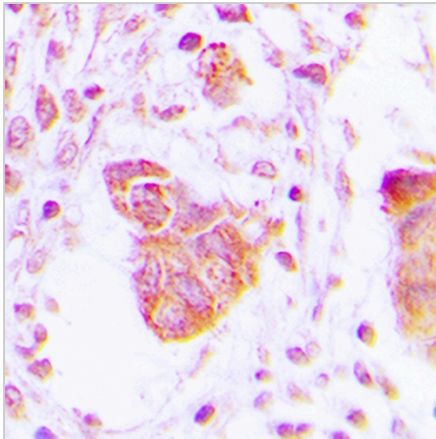
MOV10L1 Rabbit Polyclonal Antibody

CAT. NO. APA08792

DATA



Western blot analysis of MOV10L1 expression in rat testis (A), mouse testis (B) whole cell lysates. (Predicted band size: 135 kD; Observed band size: 135 kD)



Immunohistochemical analysis of MOV10L1 staining in human lung cancer formalin fixed paraffin embedded tissue section. The section was pre-treated using heat mediated antigen retrieval with sodium citrate buffer (pH 6.0). The section was then incubated with the antibody at room temperature and detected using an HRP conjugated compact polymer system. DAB was used as the chromogen. The section was then counterstained with haematoxylin and mounted with DPX.

STORAGE

Store at 4°C short term. For long term storage, store at -20°C, avoiding freeze/thaw cycles.

NOTE

For Research Use Only. Not for diagnostic, therapeutics, prophylactic or in vivo use.