

DATASHEET

HES6 Rabbit Polyclonal Antibody

CAT. NO. APA08794

KEY FEATURES

Target	HES6	Source / Host	Rabbit
Reactivity	Human	Clonality	Polyclonal
Applications	WB	Conjugation	Unconjugated
Form / Buffer	Liquid in 0.42% Potassium phosphate, 0.87% Sodium chloride, pH 7.3, 30% glycerol, and 0.01% sodium azide.		Storage at -20°C

BACKGROUND

Does not bind DNA itself but suppresses both HES1-mediated N box-dependent transcriptional repression and binding of HES1 to E box sequences. Also suppresses HES1-mediated inhibition of the heterodimer formed by ASCL1/MASH1 and TCF3/E47, allowing ASCL1 and TCF3 to up-regulate transcription in its presence. Promotes cell differentiation .

APPLICATION

To ensure optimal assay performance, AREX recommends conducting reagent titration tailored to each testing system for optimal detection results.

WB	1:500 - 1:1000
----	----------------

*Results are sample-specific. Please refer to your local assay conditions and test parameters for reference.

PRODUCT OVERVIEW

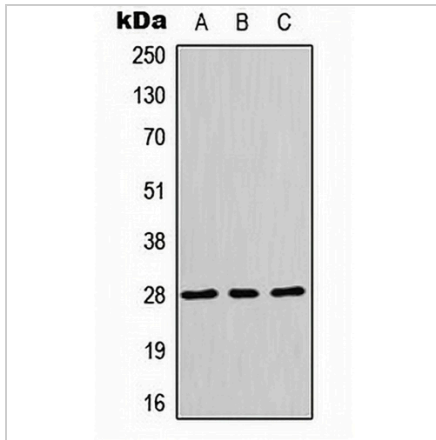
Description	Rabbit polyclonal antibody to HES6
Specificity	Recognizes endogenous levels of HES6 protein.
Antibody Type	Primary antibody
Immunogen	KLH-conjugated synthetic peptide encompassing a sequence within the N-term region of human HES6. The exact sequence is proprietary.
Purification	The antibody was purified by immunogen affinity chromatography.
Molecular Weight	Predicted: 12; Observed: 26 kD
Form/Buffer	Liquid in 0.42% Potassium phosphate, 0.87% Sodium chloride, pH 7.3, 30% glycerol, and 0.01% sodium azide.
Alternative Names	BHLHB41; Transcription cofactor HES-6; C-HAIRY1; Class B basic helix-loop-helix protein 41; bHLHb41; Hairy and enhancer of split 6
Gene Symbol	HES6
Entrez Gene	55502(Human)
SwissProt	Q96HZ4(Human)

*AREX continuously optimizes our products. Webpage content may not reflect the latest updates. For inquiries, please contact info@arexbio.com or your local distributor.

*Clone Number, Reactivity, Source/Host and Clonality can be found in the product name and Key Features section above.

DATASHEET**HES6 Rabbit Polyclonal Antibody**

CAT. NO. APA08794

DATA

Western blot analysis of HES6 expression in HepG2 (A), HeLa (B), MCF7 (C) whole cell lysates. (Predicted band size: 12; 23; 24 kD; Observed band size: 26 kD)

STORAGE

Store at 4°C short term. For long term storage, store at -20°C, avoiding freeze/thaw cycles.

NOTE

For Research Use Only. Not for diagnostic, therapeutics, prophylactic or in vivo use.