

DATASHEET

AKR1CL2 Rabbit Polyclonal Antibody

CAT. NO. APA08817

KEY FEATURES

| | | | |
|---------------|---|---------------|--------------------|
| Target | AKR1CL2 | Source / Host | Rabbit |
| Reactivity | Human, Mouse, Rat, Monkey, Pig | Clonality | Polyclonal |
| Applications | WB, IHC | Conjugation | Unconjugated |
| Form / Buffer | Liquid in 0.42% Potassium phosphate, 0.87% Sodium chloride, pH 7.3, 30% glycerol, and 0.01% sodium azide. | | Storage at-20°C |

BACKGROUND

Catalyzes the NADPH-dependent reduction of 1,5-anhydro-D-fructose (AF) to 1,5-anhydro-D-glucitol . Has low NADPH-dependent reductase activity towards 9,10-phenanthrenequinone (in vitro) to 1,5-anhydro-D-glucitol . Has low NADPH-dependent reductase activity towards 9,10-phenanthrenequinone (in vitro) .

APPLICATION

To ensure optimal assay performance, AREX recommends conducting reagent titration tailored to each testing system for optimal detection results.

| | |
|-----|----------------|
| WB | 1:500 - 1:1000 |
| IHC | 1:100 - 1:200 |

*Results are sample-specific. Please refer to your local assay conditions and test parameters for reference.

PRODUCT OVERVIEW

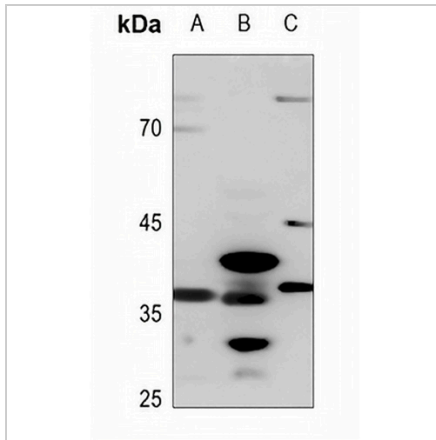
| | |
|-------------------|---|
| Description | Rabbit polyclonal antibody to AKR1CL2 |
| Specificity | Recognizes endogenous levels of AKR1CL2 protein. |
| Antibody Type | Primary antibody |
| Immunogen | KLH-conjugated synthetic peptide encompassing a sequence within the center region of human AKR1CL2. The exact sequence is proprietary. |
| Purification | The antibody was purified by immunogen affinity chromatography. |
| Molecular Weight | Predicted: 36 kD; Observed: 36 kD |
| Form/Buffer | Liquid in 0.42% Potassium phosphate, 0.87% Sodium chloride, pH 7.3, 30% glycerol, and 0.01% sodium azide. |
| Alternative Names | AKR1CL2; AKRDC1; 1,5-anhydro-D-fructose reductase; AF reductase; Aldo-keto reductase family 1 member C-like protein 2; Aldo-keto reductase family 1 member E2; LoopADR; Testis-specific protein; hTSP |
| Gene Symbol | AKR1E2 |
| Entrez Gene | 83592(Human); 56043(Mouse); 307091(Rat) |
| SwissProt | Q96JD6(Human); Q9DCT1(Mouse); Q5U1Y4(Rat) |

*AREX continuously optimizes our products. Webpage content may not reflect the latest updates. For inquiries, please contact info@arexbio.com or your local distributor.

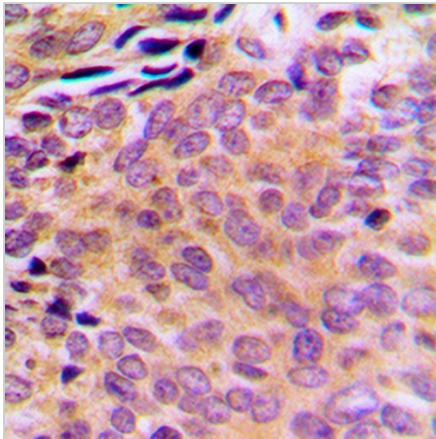
*Clone Number, Reactivity, Source/Host and Clonality can be found in the product name and Key Features section above.

DATASHEET**AKR1CL2 Rabbit Polyclonal Antibody**

CAT. NO. APA08817

DATA

Western blot analysis of AKR1CL2 expression in mouse muscle (A), rat kidney (B), rat testis (C) whole cell lysates. (Predicted band size: 36 kD; Observed band size: 36 kD)



Immunohistochemical analysis of AKR1CL2 staining in human breast cancer formalin fixed paraffin embedded tissue section. The section was pre-treated using heat mediated antigen retrieval with sodium citrate buffer (pH 6.0). The section was then incubated with the antibody at room temperature and detected using an HRP conjugated compact polymer system. DAB was used as the chromogen. The section was then counterstained with haematoxylin and mounted with DPX.

STORAGE

Store at 4°C short term. For long term storage, store at -20°C, avoiding freeze/thaw cycles.

NOTE

For Research Use Only. Not for diagnostic, therapeutics, prophylactic or in vivo use.