

DATASHEET

PNPT1 Rabbit Polyclonal Antibody

CAT. NO. APA08820

KEY FEATURES

Target	PNPT1	Source / Host	Rabbit
Reactivity	Human, Mouse, Rat	Clonality	Polyclonal
Applications	WB, IHC	Conjugation	Unconjugated
Form / Buffer	Liquid in 0.42% Potassium phosphate, 0.87% Sodium chloride, pH 7.3, 30% glycerol, and 0.01% sodium azide.		Storage at -20°C

BACKGROUND

RNA-binding protein implicated in numerous RNA metabolic processes . Catalyzes the phosphorolysis of single-stranded polyribonucleotides processively in the 3'-to-5' direction . Mitochondrial intermembrane factor with RNA-processing exoribonuclease activity . Component of the mitochondrial degradosome (mtEXO) complex, that degrades 3' overhang double-stranded RNA with a 3'-to-5' directionality in an ATP-dependent manner . Involved in the degradation of non-coding mitochondrial transcripts (MT-ncRNA) and tRNA-like molecules . Required for correct processing and polyadenylation of mitochondrial mRNAs.

APPLICATION

To ensure optimal assay performance, AREX recommends conducting reagent titration tailored to each testing system for optimal detection results.

WB	1:500 - 1:1000
IHC	1:100 - 1:200

*Results are sample-specific. Please refer to your local assay conditions and test parameters for reference.

PRODUCT OVERVIEW

Description	Rabbit polyclonal antibody to PNPT1
Specificity	Recognizes endogenous levels of PNPT1 protein.
Antibody Type	Primary antibody
Immunogen	KLH-conjugated synthetic peptide encompassing a sequence within the C-term region of human PNPT1. The exact sequence is proprietary.
Purification	The antibody was purified by immunogen affinity chromatography.
Molecular Weight	Predicted: 85 kD; Observed: 88 kD
Form/Buffer	Liquid in 0.42% Potassium phosphate, 0.87% Sodium chloride, pH 7.3, 30% glycerol, and 0.01% sodium azide.
Alternative Names	PNPASE; Polyribonucleotide nucleotidyltransferase 1 mitochondrial; 3'-5' RNA exonuclease OLD35; PNPase old-35; Polynucleotide phosphorylase 1; PNPase 1; Polynucleotide phosphorylase-like protein
Gene Symbol	PNPT1
Entrez Gene	87178(Human); 71701(Mouse)
SwissProt	Q8TCS8(Human); Q8K1R3(Mouse)

*AREX continuously optimizes our products. Webpage content may not reflect the latest updates. For inquiries, please contact info@arexbio.com or your local distributor.

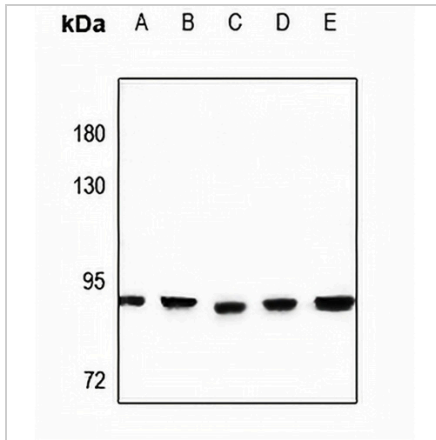
*Clone Number, Reactivity, Source/Host and Clonality can be found in the product name and Key Features section above.

DATASHEET

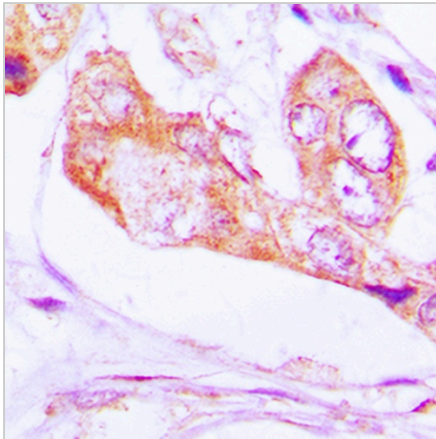
PNPT1 Rabbit Polyclonal Antibody

CAT. NO. APA08820

DATA



Western blot analysis of PNPT1 expression in PC12 (A), MEF (B), A549 (C), LO2 (D), HCT116 (E) whole cell lysates. (Predicted band size: 85 kD; Observed band size: 88 kD)



Immunohistochemical analysis of PNPT1 staining in human lung cancer formalin fixed paraffin embedded tissue section. The section was pre-treated using heat mediated antigen retrieval with sodium citrate buffer (pH 6.0). The section was then incubated with the antibody at room temperature and detected using an HRP conjugated compact polymer system. DAB was used as the chromogen. The section was then counterstained with haematoxylin and mounted with DPX.

STORAGE

Store at 4°C short term. For long term storage, store at -20°C, avoiding freeze/thaw cycles.

NOTE

For Research Use Only. Not for diagnostic, therapeutics, prophylactic or in vivo use.