

## DATASHEET

# CEACAM21 Rabbit Polyclonal Antibody

CAT. NO. APA08821

### KEY FEATURES

Target	CEACAM21	Source / Host	Rabbit
Reactivity	Human, Mouse, Rat	Clonality	Polyclonal
Applications	WB	Conjugation	Unconjugated
Form / Buffer	Liquid in 0.42% Potassium phosphate, 0.87% Sodium chloride, pH 7.3, 30% glycerol, and 0.01% sodium azide.		Storage at -20°C

### BACKGROUND

Cell adhesion molecule CEACAM21 (CEACAM21), also known as Carcinoembryonic antigen-related cell adhesion molecule 21, CEA cell adhesion molecule 21. Belongs to the immunoglobulin superfamily. CEA family Subcellular location: Membrane

### APPLICATION

To ensure optimal assay performance, AREX recommends conducting reagent titration tailored to each testing system for optimal detection results.

WB	1:500 - 1:1000
----	----------------

\*Results are sample-specific. Please refer to your local assay conditions and test parameters for reference.

### PRODUCT OVERVIEW

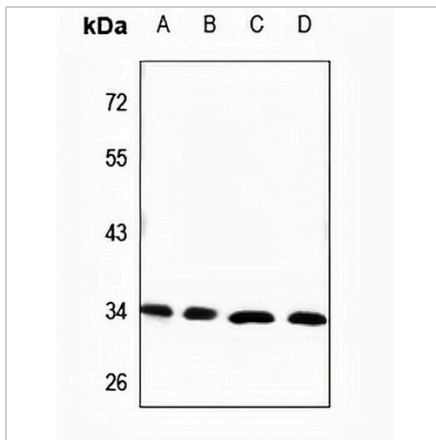
Description	Rabbit polyclonal antibody to CEACAM21
Specificity	Recognizes endogenous levels of CEACAM21 protein.
Antibody Type	Primary antibody
Immunogen	KLH-conjugated synthetic peptide encompassing a sequence within the center region of human CEACAM21. The exact sequence is proprietary.
Purification	The antibody was purified by immunogen affinity chromatography.
Molecular Weight	Predicted: 32 kD; Observed: 32 kD
Form/Buffer	Liquid in 0.42% Potassium phosphate, 0.87% Sodium chloride, pH 7.3, 30% glycerol, and 0.01% sodium azide.
Alternative Names	Carcinoembryonic antigen-related cell adhesion molecule 21
Gene Symbol	CEACAM21
Entrez Gene	90273(Human)
SwissProt	Q3KPI0(Human)

\*AREX continuously optimizes our products. Webpage content may not reflect the latest updates. For inquiries, please contact [info@arexbio.com](mailto:info@arexbio.com) or your local distributor.

\*Clone Number, Reactivity, Source/Host and Clonality can be found in the product name and Key Features section above.

**DATASHEET****CEACAM21 Rabbit Polyclonal Antibody**

CAT. NO. APA08821

**DATA**

Western blot analysis of CEACAM21 expression in CT26 (A), PC12 (B), A549 (C), MCF7 (D) whole cell lysates. (Predicted band size: 32 kD; Observed band size: 32 kD)

**STORAGE**

Store at 4°C short term. For long term storage, store at -20°C, avoiding freeze/thaw cycles.

**NOTE**

For Research Use Only. Not for diagnostic, therapeutics, prophylactic or in vivo use.