

## DATASHEET

# BTF3L4 Rabbit Polyclonal Antibody

CAT. NO. APA08823

### KEY FEATURES

Target	BTF3L4	Source / Host	Rabbit
Reactivity	Human, Mouse, Rat, Bovine, Chicken, Zebrafish	Clonality	Polyclonal
Applications	WB, IHC	Conjugation	Unconjugated
Form / Buffer	Liquid in 0.42% Potassium phosphate, 0.87% Sodium chloride, pH 7.3, 30% glycerol, and 0.01% sodium azide.		Storage at -20°C

### BACKGROUND

basic transcription factor 3 like 4. Also known as: transcription factor BTF3 homolog 4.

### APPLICATION

To ensure optimal assay performance, AREX recommends conducting reagent titration tailored to each testing system for optimal detection results.

WB	1:500 - 1:1000
IHC	1:100 - 1:200

\*Results are sample-specific. Please refer to your local assay conditions and test parameters for reference.

### PRODUCT OVERVIEW

Description	Rabbit polyclonal antibody to BTF3L4
Specificity	Recognizes endogenous levels of BTF3L4 protein.
Antibody Type	Primary antibody
Immunogen	KLH-conjugated synthetic peptide encompassing a sequence within the center region of human BTF3L4. The exact sequence is proprietary.
Purification	The antibody was purified by immunogen affinity chromatography.
Molecular Weight	Predicted: 17 kD; Observed: 17 kD
Form/Buffer	Liquid in 0.42% Potassium phosphate, 0.87% Sodium chloride, pH 7.3, 30% glycerol, and 0.01% sodium azide.
Alternative Names	Transcription factor BTF3 homolog 4; Basic transcription factor 3-like 4
Gene Symbol	BTF3L4
Entrez Gene	91408(Human); 70533(Mouse)
SwissProt	Q96K17(Human); Q9CQH7(Mouse)

\*AREX continuously optimizes our products. Webpage content may not reflect the latest updates. For inquiries, please contact [info@arexbio.com](mailto:info@arexbio.com) or your local distributor.

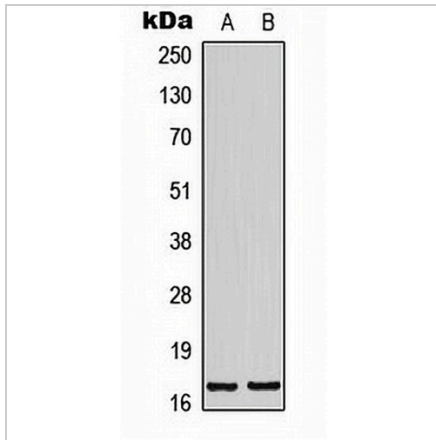
\*Clone Number, Reactivity, Source/Host and Clonality can be found in the product name and Key Features section above.

**DATASHEET**

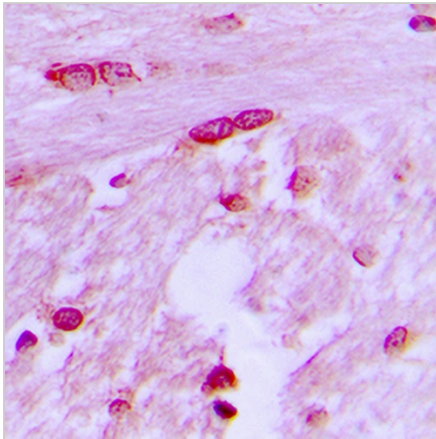
**BTF3L4 Rabbit Polyclonal Antibody**

CAT. NO. APA08823

**DATA**



Western blot analysis of BTF3L4 expression in K562 (A), NIH3T3 (B) whole cell lysates. (Predicted band size: 17 kD; Observed band size: 17 kD)



Immunohistochemical analysis of BTF3L4 staining in human brain formalin fixed paraffin embedded tissue section. The section was pre-treated using heat mediated antigen retrieval with sodium citrate buffer (pH 6.0). The section was then incubated with the antibody at room temperature and detected using an HRP conjugated compact polymer system. DAB was used as the chromogen. The section was then counterstained with haematoxylin and mounted with DPX.

**STORAGE**

Store at 4°C short term. For long term storage, store at -20°C, avoiding freeze/thaw cycles.

**NOTE**

For Research Use Only. Not for diagnostic, therapeutics, prophylactic or in vivo use.