

DATASHEET

Claudin 19 Rabbit Polyclonal Antibody

CAT. NO. APA08830

KEY FEATURES

Target	Claudin 19	Source / Host	Rabbit
Reactivity	Human, Bovine	Clonality	Polyclonal
Applications	WB	Conjugation	Unconjugated
Form / Buffer	Liquid in 0.42% Potassium phosphate, 0.87% Sodium chloride, pH 7.3, 30% glycerol, and 0.01% sodium azide.		Storage at -20°C

BACKGROUND

Forms paracellular channels: coassembles with CLDN16 into tight junction strands with cation-selective channels through the strands, conveying epithelial permeability in a process known as paracellular tight junction permeability . Involved in the maintenance of ion gradients along the nephron. In the thick ascending limb (TAL) of Henle's loop, facilitates sodium paracellular permeability from the interstitial compartment to the lumen, contributing to the lumen-positive transepithelial potential that drives paracellular magnesium and calcium reabsorption . Forms paracellular barriers on its own. In the peripheral nervous system, represents a major constituent of the tight junctions in Schwann cells and contributes to electrical sealing.

APPLICATION

To ensure optimal assay performance, AREX recommends conducting reagent titration tailored to each testing system for optimal detection results.

WB	1:500 - 1:1000
----	----------------

*Results are sample-specific. Please refer to your local assay conditions and test parameters for reference.

PRODUCT OVERVIEW

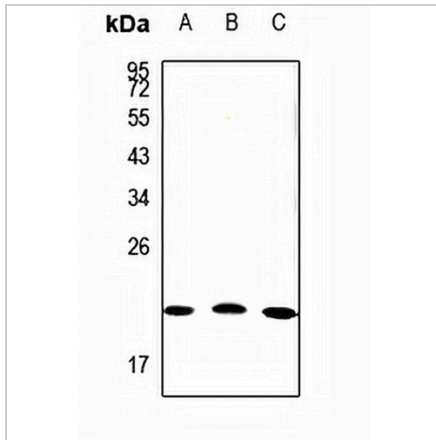
Description	Rabbit polyclonal antibody to Claudin 19
Specificity	Recognizes endogenous levels of Claudin 19 protein.
Antibody Type	Primary antibody
Immunogen	KLH-conjugated synthetic peptide encompassing a sequence within the center region of human Claudin 19. The exact sequence is proprietary.
Purification	The antibody was purified by immunogen affinity chromatography.
Molecular Weight	Predicted: 23 kD; Observed: 21 kD
Form/Buffer	Liquid in 0.42% Potassium phosphate, 0.87% Sodium chloride, pH 7.3, 30% glycerol, and 0.01% sodium azide.
Alternative Names	Claudin-19
Gene Symbol	CLDN19
Entrez Gene	149461(Human)
SwissProt	Q8N6F1(Human)

*AREX continuously optimizes our products. Webpage content may not reflect the latest updates. For inquiries, please contact info@arexbio.com or your local distributor.

*Clone Number, Reactivity, Source/Host and Clonality can be found in the product name and Key Features section above.

DATASHEET**Claudin 19 Rabbit Polyclonal Antibody**

CAT. NO. APA08830

DATA

Western blot analysis of Claudin 19 expression in LO2 (A), HEK293T (B), A549 (C) whole cell lysates. (Predicted band size: 23 kD; Observed band size: 21 kD)

STORAGE

Store at 4°C short term. For long term storage, store at -20°C, avoiding freeze/thaw cycles.

NOTE

For Research Use Only. Not for diagnostic, therapeutics, prophylactic or in vivo use.