

DATASHEET

NFIA Rabbit Polyclonal Antibody

CAT. NO. APA08851

KEY FEATURES

Target	NFIA	Source / Host	Rabbit
Reactivity	Human, Mouse, Rat, Bovine, Chicken, Pig, Zebrafish	Clonality	Polyclonal
Applications	WB, IHC, IF/ICC	Conjugation	Unconjugated
Form / Buffer	Liquid in 0.42% Potassium phosphate, 0.87% Sodium chloride, pH 7.3, 30% glycerol, and 0.01% sodium azide.	Storage	at-20°C

BACKGROUND

Recognizes and binds the palindromic sequence 5'-TTGGCNNNNNGCCAA-3' present in viral and cellular promoters and in the origin of replication of adenovirus type 2. These proteins are individually capable of activating transcription and replication.

APPLICATION

To ensure optimal assay performance, AREX recommends conducting reagent titration tailored to each testing system for optimal detection results.

WB	1:500 - 1:1000
IHC	1:100 - 1:200
IF/ICC	1:50 - 1:200

*Results are sample-specific. Please refer to your local assay conditions and test parameters for reference.

PRODUCT OVERVIEW

Description	Rabbit polyclonal antibody to NFIA
Specificity	Recognizes endogenous levels of NFIA protein.
Antibody Type	Primary antibody
Immunogen	KLH-conjugated synthetic peptide encompassing a sequence within the N-term region of human NFIA. The exact sequence is proprietary.
Purification	The antibody was purified by immunogen affinity chromatography.
Molecular Weight	Predicted: 55; Observed: 65 kD
Form/Buffer	Liquid in 0.42% Potassium phosphate, 0.87% Sodium chloride, pH 7.3, 30% glycerol, and 0.01% sodium azide.
Alternative Names	NFIA; KIAA1439; Nuclear factor 1 A-type; NF1-A; Nuclear factor 1/A; CCAAT-box-binding transcription factor; CTF; Nuclear factor I/A; NF-I/A; NFI-A; TGGCA-binding protein; NFIB; Nuclear factor 1 B-type; NF1-B; Nuclear factor 1/B; CCAAT-box-binding transcription factor; CTF; Nuclear factor I/B; NF-I/B; NFI-B; TGGCA-binding protein; NFIC; NFI; Nuclear factor 1 C-type; NF1-C; Nuclear factor 1/C; CCAAT-box-binding transcription factor; CTF; Nuclear factor I/C; NF-I/C; NFI-C; TGGCA-binding protein; NFIX; Nuclear factor 1 X-type; NF1-X; Nuclear factor 1/X; CCAAT-box-binding transcription factor; CTF; Nuclear factor I/X; NF-I/X; NFI-X; TGGCA-binding protein
Gene Symbol	NFIA
Entrez Gene	4774; 4781; 4782; 4784(Human); 18027; 18028; 18029; 18032(Mouse); 25492(Rat)
SwissProt	Q12857; O00712; P08651; Q14938(Human); Q02780; P97863; P70255; P70257(Mouse); P09414(Rat)

*AREX continuously optimizes our products. Webpage content may not reflect the latest updates. For inquiries, please contact info@arexbio.com or your local distributor.

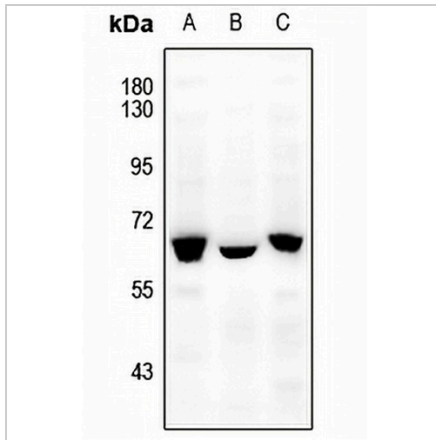
*Clone Number, Reactivity, Source/Host and Clonality can be found in the product name and Key Features section above.

DATASHEET

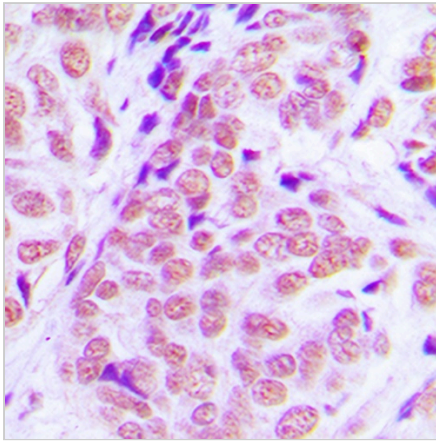
NFIA Rabbit Polyclonal Antibody

CAT. NO. APA08851

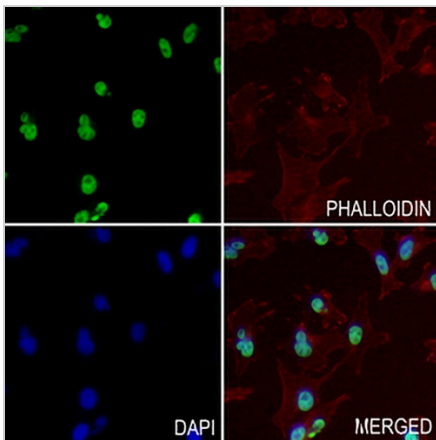
DATA



Western blot analysis of NFIA expression in LO2 (A), C6 (B), A2780 (C) whole cell lysates. (Predicted band size: 55; 47 kD; Observed band size: 65 kD)



Immunohistochemical analysis of NFIA staining in human breast cancer formalin fixed paraffin embedded tissue section. The section was pre-treated using heat mediated antigen retrieval with sodium citrate buffer (pH 6.0). The section was then incubated with the antibody at room temperature and detected using an HRP conjugated compact polymer system. DAB was used as the chromogen. The section was then counterstained with haematoxylin and mounted with DPX.



Immunofluorescent analysis of NFIA staining in MDAMB231 cells. Formalin-fixed cells were permeabilized with 0.1% Triton X-100 in TBS for 5-10 minutes and blocked with 3% BSA-PBS for 30 minutes at room temperature. Cells were probed with the primary antibody in 3% BSA-PBS and incubated overnight at 4 °C in a humidified chamber. Cells were washed with PBST and incubated with a AREX® Fluor 488 -conjugated secondary antibody (green) in PBS at room temperature in the dark. Phalloidin - AREX® Fluor 594 was used to stain Actin filaments (red). DAPI was used to stain the cell nuclei (blue).

STORAGE

Store at 4°C short term. For long term storage, store at -20°C, avoiding freeze/thaw cycles.

NOTE

For Research Use Only. Not for diagnostic, therapeutics, prophylactic or in vivo use.