

DATASHEET

Factor B Rabbit Polyclonal Antibody

CAT. NO. APA08863

KEY FEATURES

Target	Factor B	Source / Host	Rabbit
Reactivity	Human, Mouse, Rat, Bovine	Clonality	Polyclonal
Applications	WB	Conjugation	Unconjugated
Form / Buffer	Liquid in 0.42% Potassium phosphate, 0.87% Sodium chloride, pH 7.3, 30% glycerol, and 0.01% sodium azide.		Storage at-20°C

BACKGROUND

Precursor of the catalytic component of the C3 and C5 convertase complexes of the alternative pathway of the complement system, a cascade of proteins that leads to phagocytosis and breakdown of pathogens and signaling that strengthens the adaptive immune system. The alternative complement pathway acts as an amplification loop that enhances other complement pathways (classical, lectin and GZMK) by promoting formation of additional C3 and C5 convertases. CFB is cleaved and activated by CFD to generate Ba and Bb chains; Bb chain constituting the catalytic component of the C3 and C5 convertases.

APPLICATION

To ensure optimal assay performance, AREX recommends conducting reagent titration tailored to each testing system for optimal detection results.

WB	1:500 - 1:1000
----	----------------

*Results are sample-specific. Please refer to your local assay conditions and test parameters for reference.

PRODUCT OVERVIEW

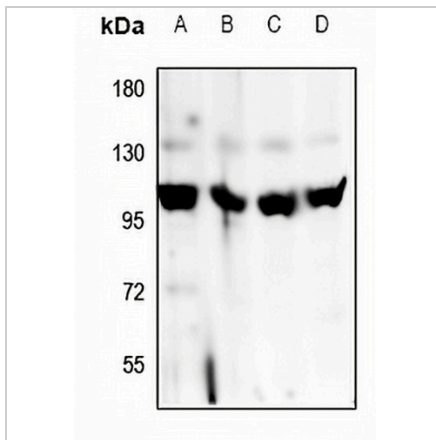
Description	Rabbit polyclonal antibody to Factor B
Specificity	Recognizes endogenous levels of Factor B protein.
Antibody Type	Primary antibody
Immunogen	KLH-conjugated synthetic peptide encompassing a sequence within the center region of human Factor B. The exact sequence is proprietary.
Purification	The antibody was purified by immunogen affinity chromatography.
Molecular Weight	Predicted: 85 kD; Observed: 110 kD
Form/Buffer	Liquid in 0.42% Potassium phosphate, 0.87% Sodium chloride, pH 7.3, 30% glycerol, and 0.01% sodium azide.
Alternative Names	BF; BFD; Complement factor B; C3/C5 convertase; Glycine-rich beta glycoprotein; GBG; PBF2; Properdin factor B
Gene Symbol	CFB
Entrez Gene	629(Human)
SwissProt	P00751(Human); P04186(Mouse)

*AREX continuously optimizes our products. Webpage content may not reflect the latest updates. For inquiries, please contact info@arexbio.com or your local distributor.

*Clone Number, Reactivity, Source/Host and Clonality can be found in the product name and Key Features section above.

DATASHEET**Factor B Rabbit Polyclonal Antibody**

CAT. NO. APA08863

DATA

Western blot analysis of Factor B expression in A549 (A), HepG2 (B), PC12 (C), CT26 (D) whole cell lysates. (Predicted band size: 85 kD; Observed band size: 110 kD)

STORAGE

Store at 4°C short term. For long term storage, store at -20°C, avoiding freeze/thaw cycles.

NOTE

For Research Use Only. Not for diagnostic, therapeutics, prophylactic or in vivo use.