

**DATASHEET**

**ABHD3 Rabbit Polyclonal Antibody**

CAT. NO. APA08865

**KEY FEATURES**

Target	ABHD3	Source / Host	Rabbit
Reactivity	Human, Mouse, Rat, Bovine, Monkey	Clonality	Polyclonal
Applications	WB	Conjugation	Unconjugated
Form / Buffer	Liquid in 0.42% Potassium phosphate, 0.87% Sodium chloride, pH 7.3, 30% glycerol, and 0.01% sodium azide.		Storage at -20°C

**BACKGROUND**

Phospholipase that may play a role in phospholipids remodeling. May selectively cleave myristate (C14)-containing phosphatidylcholines through its predominant phospholipase 1 activity, cleaving preferentially acyl groups in sn1 position. In parallel, may have a minor phospholipase 2 activity acting on acyl groups in position sn2. In addition to (C14)-containing phosphatidylcholines, may also act on other medium-chain-containing and oxidatively truncated phospholipids.

**APPLICATION**

To ensure optimal assay performance, AREX recommends conducting reagent titration tailored to each testing system for optimal detection results.

WB	1:500 - 1:1000
----	----------------

\*Results are sample-specific. Please refer to your local assay conditions and test parameters for reference.

**PRODUCT OVERVIEW**

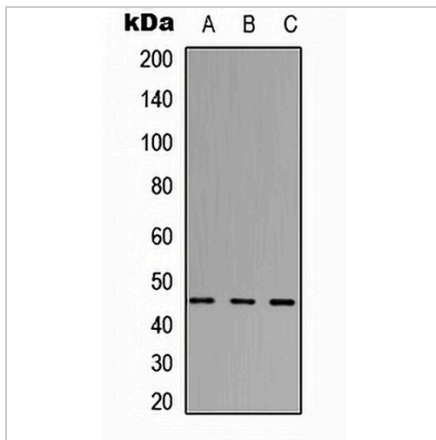
Description	Rabbit polyclonal antibody to ABHD3
Specificity	Recognizes endogenous levels of ABHD3 protein.
Antibody Type	Primary antibody
Immunogen	KLH-conjugated synthetic peptide encompassing a sequence within the center region of human ABHD3. The exact sequence is proprietary.
Purification	The antibody was purified by immunogen affinity chromatography.
Molecular Weight	Predicted: 46 kD; Observed: 46 kD
Form/Buffer	Liquid in 0.42% Potassium phosphate, 0.87% Sodium chloride, pH 7.3, 30% glycerol, and 0.01% sodium azide.
Alternative Names	LABH3; Abhydrolase domain-containing protein 3; Lung alpha/beta hydrolase 3
Gene Symbol	ABHD3
Entrez Gene	171586(Human); 106861(Mouse)
SwissProt	Q8WU67(Human); Q91ZH7(Mouse)

\*AREX continuously optimizes our products. Webpage content may not reflect the latest updates. For inquiries, please contact [info@arexbio.com](mailto:info@arexbio.com) or your local distributor.

\*Clone Number, Reactivity, Source/Host and Clonality can be found in the product name and Key Features section above.

**DATASHEET****ABHD3 Rabbit Polyclonal Antibody**

CAT. NO. APA08865

**DATA**

Western blot analysis of ABHD3 expression in HEK293T (A), Raw264.7 (B), PC12 (C) whole cell lysates. (Predicted band size: 46 kD; Observed band size: 46 kD )

**STORAGE**

Store at 4°C short term. For long term storage, store at -20°C, avoiding freeze/thaw cycles.

**NOTE**

For Research Use Only. Not for diagnostic, therapeutics, prophylactic or in vivo use.