

DATASHEET

AChE Q Rabbit Polyclonal Antibody

CAT. NO. APA08866

KEY FEATURES

Target	AChE Q	Source / Host	Rabbit
Reactivity	Human, Mouse, Rat	Clonality	Polyclonal
Applications	WB	Conjugation	Unconjugated
Form / Buffer	Liquid in 0.42% Potassium phosphate, 0.87% Sodium chloride, pH 7.3, 30% glycerol, and 0.01% sodium azide.	Storage	at-20°C

BACKGROUND

Anchors the catalytic subunits of asymmetric AChE to the synaptic basal membrane, and is therefore involved in the down-regulation of cholinergic synaptic transmission.

APPLICATION

To ensure optimal assay performance, AREX recommends conducting reagent titration tailored to each testing system for optimal detection results.

WB	1:500 - 1:1000
----	----------------

*Results are sample-specific. Please refer to your local assay conditions and test parameters for reference.

PRODUCT OVERVIEW

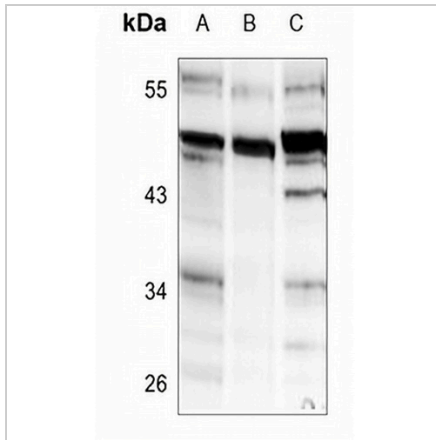
Description	Rabbit polyclonal antibody to AChE Q
Specificity	Recognizes endogenous levels of AChE Q protein.
Antibody Type	Primary antibody
Immunogen	KLH-conjugated synthetic peptide encompassing a sequence within the center region of human AChE Q. The exact sequence is proprietary.
Purification	The antibody was purified by immunogen affinity chromatography.
Molecular Weight	Predicted: 47 kD; Observed: 50 kD
Form/Buffer	Liquid in 0.42% Potassium phosphate, 0.87% Sodium chloride, pH 7.3, 30% glycerol, and 0.01% sodium azide.
Alternative Names	Acetylcholinesterase collagenic tail peptide; AChE Q subunit; Acetylcholinesterase-associated collagen
Gene Symbol	COLQ
Entrez Gene	8292(Human); 382864(Mouse); 29755(Rat)
SwissProt	Q9Y215(Human); O35348(Mouse); O35167(Rat)

*AREX continuously optimizes our products. Webpage content may not reflect the latest updates. For inquiries, please contact info@arexbio.com or your local distributor.

*Clone Number, Reactivity, Source/Host and Clonality can be found in the product name and Key Features section above.

DATASHEET**AChE Q Rabbit Polyclonal Antibody**

CAT. NO. APA08866

DATA

Western blot analysis of AChE Q expression in SP20 (A), H9C2 (B), PC3 (C) whole cell lysates. (Predicted band size: 47 kD; Observed band size: 50 kD)

STORAGE

Store at 4°C short term. For long term storage, store at -20°C, avoiding freeze/thaw cycles.

NOTE

For Research Use Only. Not for diagnostic, therapeutics, prophylactic or in vivo use.