

DATASHEET

ADAM12 Rabbit Polyclonal Antibody

CAT. NO. APA08867

KEY FEATURES

Target	ADAM12	Source / Host	Rabbit
Reactivity	Human, Mouse, Rat	Clonality	Polyclonal
Applications	WB	Conjugation	Unconjugated
Form / Buffer	Liquid in 0.42% Potassium phosphate, 0.87% Sodium chloride, pH 7.3, 30% glycerol, and 0.01% sodium azide.		Storage at -20°C

BACKGROUND

Involved in skeletal muscle regeneration, specifically at the onset of cell fusion. Also involved in macrophage-derived giant cells (MGC) and osteoclast formation from mononuclear precursors .

APPLICATION

To ensure optimal assay performance, AREX recommends conducting reagent titration tailored to each testing system for optimal detection results.

WB	1:500 - 1:1000
----	----------------

*Results are sample-specific. Please refer to your local assay conditions and test parameters for reference.

PRODUCT OVERVIEW

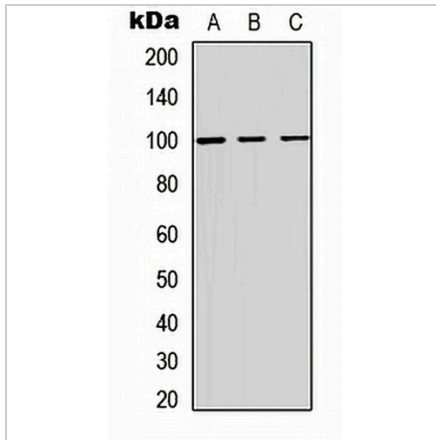
Description	Rabbit polyclonal antibody to ADAM12
Specificity	Recognizes endogenous levels of ADAM12 protein.
Antibody Type	Primary antibody
Immunogen	KLH-conjugated synthetic peptide encompassing a sequence within the center region of human ADAM12. The exact sequence is proprietary.
Purification	The antibody was purified by immunogen affinity chromatography.
Molecular Weight	Predicted: 99 kD; Observed: 99; 77 kD
Form/Buffer	Liquid in 0.42% Potassium phosphate, 0.87% Sodium chloride, pH 7.3, 30% glycerol, and 0.01% sodium azide.
Alternative Names	MLTN; Disintegrin and metalloproteinase domain-containing protein 12; ADAM 12; Meltrin-alpha
Gene Symbol	ADAM12
Entrez Gene	8038(Human); 11489(Mouse)
SwissProt	O43184(Human); Q61824(Mouse)

*AREX continuously optimizes our products. Webpage content may not reflect the latest updates. For inquiries, please contact info@arexbio.com or your local distributor.

*Clone Number, Reactivity, Source/Host and Clonality can be found in the product name and Key Features section above.

DATASHEET**ADAM12 Rabbit Polyclonal Antibody**

CAT. NO. APA08867

DATA

Western blot analysis of ADAM12 expression in HEK293T (A), Raw264.7 (B), H9C2 (C) whole cell lysates. (Predicted band size: 99 kD; Observed band size: 99; 77 kD)

STORAGE

Store at 4°C short term. For long term storage, store at -20°C, avoiding freeze/thaw cycles.

NOTE

For Research Use Only. Not for diagnostic, therapeutics, prophylactic or in vivo use.