

DATASHEET

Adipsin Rabbit Polyclonal Antibody

CAT. NO. APA08870

KEY FEATURES

Target	Adipsin	Source / Host	Rabbit
Reactivity	Human, Mouse, Rat	Clonality	Polyclonal
Applications	WB	Conjugation	Unconjugated
Form / Buffer	Liquid in 0.42% Potassium phosphate, 0.87% Sodium chloride, pH 7.3, 30% glycerol, and 0.01% sodium azide.		Storage at -20°C

BACKGROUND

Serine protease that initiates the alternative pathway of the complement system, a cascade of proteins that leads to phagocytosis and breakdown of pathogens and signaling that strengthens the adaptive immune system . In contrast to other complement pathways (classical, lectin and GZMK) that are directly activated by pathogens or antigen-antibody complexes, the alternative complement pathway is initiated by the spontaneous hydrolysis of complement C3 . The alternative complement pathway acts as an amplification loop that enhances complement activation by mediating the formation of C3 and C5 convertases . Activated CFD cleaves factor B (CFB) when the latter is complexed with complement C3b, activating the C3 convertase of the alternative pathway .

APPLICATION

To ensure optimal assay performance, AREX recommends conducting reagent titration tailored to each testing system for optimal detection results.

WB	1:500 - 1:1000
----	----------------

*Results are sample-specific. Please refer to your local assay conditions and test parameters for reference.

PRODUCT OVERVIEW

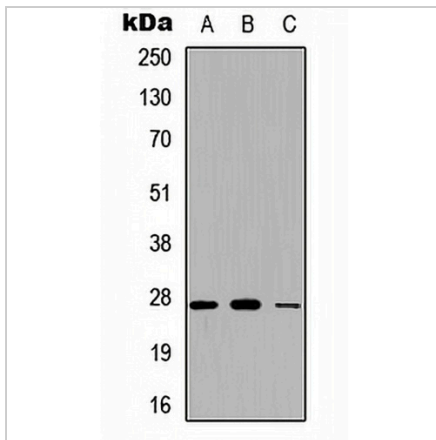
Description	Rabbit polyclonal antibody to Adipsin
Specificity	Recognizes endogenous levels of Adipsin protein.
Antibody Type	Primary antibody
Immunogen	KLH-conjugated synthetic peptide encompassing a sequence within the N-term region of human Adipsin. The exact sequence is proprietary.
Purification	The antibody was purified by immunogen affinity chromatography.
Molecular Weight	Predicted: 27 kD; Observed: 27 kD
Form/Buffer	Liquid in 0.42% Potassium phosphate, 0.87% Sodium chloride, pH 7.3, 30% glycerol, and 0.01% sodium azide.
Alternative Names	DF; PFD; Complement factor D; Adipsin; C3 convertase activator; Properdin factor D
Gene Symbol	CFD
Entrez Gene	1675(Human); 11537(Mouse); 54249(Rat)
SwissProt	P00746(Human); P03953(Mouse); P32038(Rat)

*AREX continuously optimizes our products. Webpage content may not reflect the latest updates. For inquiries, please contact info@arexbio.com or your local distributor.

*Clone Number, Reactivity, Source/Host and Clonality can be found in the product name and Key Features section above.

DATASHEET**Adipsin Rabbit Polyclonal Antibody**

CAT. NO. APA08870

DATA

Western blot analysis of Adipsin expression in A549 (A), NS-1 (B), PC12 (C) whole cell lysates. (Predicted band size: 27 kD; Observed band size: 27 kD)

STORAGE

Store at 4°C short term. For long term storage, store at -20°C, avoiding freeze/thaw cycles.

NOTE

For Research Use Only. Not for diagnostic, therapeutics, prophylactic or in vivo use.