

DATASHEET

ARHGAP30 Rabbit Polyclonal Antibody

CAT. NO. APA08881

KEY FEATURES

Target	ARHGAP30	Source / Host	Rabbit
Reactivity	Human, Mouse	Clonality	Polyclonal
Applications	WB	Conjugation	Unconjugated
Form / Buffer	Liquid in 0.42% Potassium phosphate, 0.87% Sodium chloride, pH 7.3, 30% glycerol, and 0.01% sodium azide.		Storage at -20°C

BACKGROUND

GTPase-activating protein (GAP) for RAC1 and RHOA, but not for CDC42.

APPLICATION

To ensure optimal assay performance, AREX recommends conducting reagent titration tailored to each testing system for optimal detection results.

WB	1:500 - 1:1000
----	----------------

*Results are sample-specific. Please refer to your local assay conditions and test parameters for reference.

PRODUCT OVERVIEW

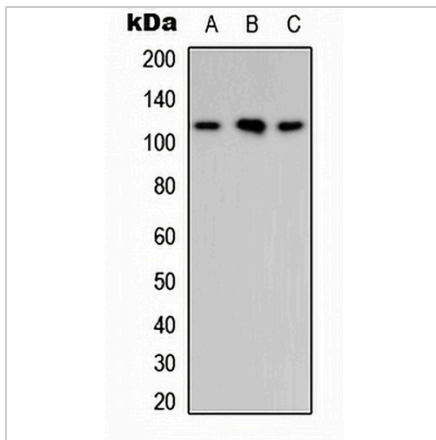
Description	Rabbit polyclonal antibody to ARHGAP30
Specificity	Recognizes endogenous levels of ARHGAP30 protein.
Antibody Type	Primary antibody
Immunogen	KLH-conjugated synthetic peptide encompassing a sequence within the center region of human ARHGAP30. The exact sequence is proprietary.
Purification	The antibody was purified by immunogen affinity chromatography.
Molecular Weight	Predicted: 118 kD; Observed: 119 kD
Form/Buffer	Liquid in 0.42% Potassium phosphate, 0.87% Sodium chloride, pH 7.3, 30% glycerol, and 0.01% sodium azide.
Alternative Names	Rho GTPase-activating protein 30; Rho-type GTPase-activating protein 30
Gene Symbol	ARHGAP30
Entrez Gene	257106(Human); 226652(Mouse)
SwissProt	Q7Z6I6(Human); Q640N3(Mouse)

*AREX continuously optimizes our products. Webpage content may not reflect the latest updates. For inquiries, please contact info@arexbio.com or your local distributor.

*Clone Number, Reactivity, Source/Host and Clonality can be found in the product name and Key Features section above.

DATASHEET**ARHGAP30 Rabbit Polyclonal Antibody**

CAT. NO. APA08881

DATA

Western blot analysis of ARHGAP30 expression in MCF7 (A), Raw264.7 (B), PC12 (C) whole cell lysates. (Predicted band size: 118 kD; Observed band size: 119 kD)

STORAGE

Store at 4°C short term. For long term storage, store at -20°C, avoiding freeze/thaw cycles.

NOTE

For Research Use Only. Not for diagnostic, therapeutics, prophylactic or in vivo use.