

**DATASHEET**

**B3GALT6 Rabbit Polyclonal Antibody**

CAT. NO. APA08884

**KEY FEATURES**

Target	B3GALT6	Source / Host	Rabbit
Reactivity	Human, Rat	Clonality	Polyclonal
Applications	WB	Conjugation	Unconjugated
Form / Buffer	Liquid in 0.42% Potassium phosphate, 0.87% Sodium chloride, pH 7.3, 30% glycerol, and 0.01% sodium azide.		Storage at -20°C

**BACKGROUND**

Beta-1,3-galactosyltransferase that transfers galactose from UDP-galactose to substrates with a terminal beta-linked galactose residue. Has a preference for galactose-beta-1,4-xylose that is found in the linker region of glycosaminoglycans, such as heparan sulfate and chondroitin sulfate. Has no activity towards substrates with terminal glucosamine or galactosamine residues.

**APPLICATION**

To ensure optimal assay performance, AREX recommends conducting reagent titration tailored to each testing system for optimal detection results.

WB	1:500 - 1:1000
----	----------------

\*Results are sample-specific. Please refer to your local assay conditions and test parameters for reference.

**PRODUCT OVERVIEW**

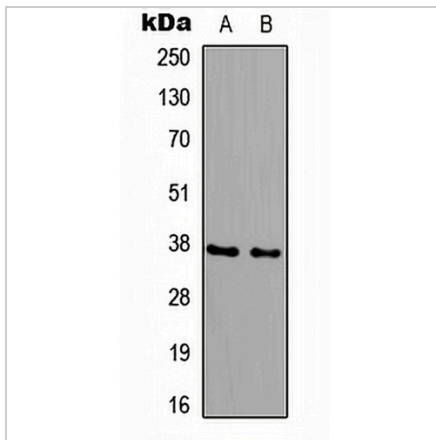
Description	Rabbit polyclonal antibody to B3GALT6
Specificity	Recognizes endogenous levels of B3GALT6 protein.
Antibody Type	Primary antibody
Immunogen	KLH-conjugated synthetic peptide encompassing a sequence within the center region of human B3GALT6. The exact sequence is proprietary.
Purification	The antibody was purified by immunogen affinity chromatography.
Molecular Weight	Predicted: 37 kD; Observed: 37 kD
Form/Buffer	Liquid in 0.42% Potassium phosphate, 0.87% Sodium chloride, pH 7.3, 30% glycerol, and 0.01% sodium azide.
Alternative Names	Beta-1,3-galactosyltransferase 6; Beta-1,3-GalTase 6; Beta3Gal-T6; Beta3GalT6; GAG GalTII; Galactosyltransferase II; Galactosylxylosylprotein 3-beta-galactosyltransferase; UDP-Gal:betaGal beta 1,3-galactosyltransferase polypeptide 6
Gene Symbol	B3GALT6
Entrez Gene	126792(Human); 117592(Mouse)
SwissProt	Q96L58(Human); Q91Z92(Mouse)

\*AREX continuously optimizes our products. Webpage content may not reflect the latest updates. For inquiries, please contact [info@arexbio.com](mailto:info@arexbio.com) or your local distributor.

\*Clone Number, Reactivity, Source/Host and Clonality can be found in the product name and Key Features section above.

**DATASHEET****B3GALT6 Rabbit Polyclonal Antibody**

CAT. NO. APA08884

**DATA**

Western blot analysis of B3GALT6 expression in HeLa (A), PC12 (B) whole cell lysates. (Predicted band size: 37 kD; Observed band size: 37 kD)

**STORAGE**

Store at 4°C short term. For long term storage, store at -20°C, avoiding freeze/thaw cycles.

**NOTE**

For Research Use Only. Not for diagnostic, therapeutics, prophylactic or in vivo use.