

DATASHEET

B4GALT6 Rabbit Polyclonal Antibody

CAT. NO. APA08885

KEY FEATURES

Target	B4GALT6	Source / Host	Rabbit
Reactivity	Human, Mouse, Monkey	Clonality	Polyclonal
Applications	WB, IHC	Conjugation	Unconjugated
Form / Buffer	Liquid in 0.42% Potassium phosphate, 0.87% Sodium chloride, pH 7.3, 30% glycerol, and 0.01% sodium azide.		Storage at-20°C

BACKGROUND

Catalyzes the synthesis of lactosylceramide (LacCer) via the transfer of galactose from UDP-galactose to glucosylceramide (GlcCer) via the transfer of galactose from UDP-galactose to glucosylceramide (GlcCer) . LacCer is the starting point in the biosynthesis of all gangliosides (membrane-bound glycosphingolipids) which play pivotal roles in the CNS including neuronal maturation and axonal and myelin formation .

APPLICATION

To ensure optimal assay performance, AREX recommends conducting reagent titration tailored to each testing system for optimal detection results.

WB	1:500 - 1:1000
IHC	1:50 - 1:100

*Results are sample-specific. Please refer to your local assay conditions and test parameters for reference.

PRODUCT OVERVIEW

Description	Rabbit polyclonal antibody to B4GALT6
Specificity	Recognizes endogenous levels of B4GALT6 protein.
Antibody Type	Primary antibody
Immunogen	KLH-conjugated synthetic peptide encompassing a sequence within the C-term region of human B4GALT6. The exact sequence is proprietary.
Purification	The antibody was purified by immunogen affinity chromatography.
Molecular Weight	Predicted: 44 kD; Observed: 45 kD
Form/Buffer	Liquid in 0.42% Potassium phosphate, 0.87% Sodium chloride, pH 7.3, 30% glycerol, and 0.01% sodium azide.
Alternative Names	Beta-1,4-galactosyltransferase 6; Beta-1,4-GalTase 6; Beta4Gal-T6; b4Gal-T6; UDP-Gal:beta-GlcNAc beta-1,4-galactosyltransferase 6; UDP-galactose:beta-N-acetylglucosamine beta-1,4-galactosyltransferase 6
Gene Symbol	B4GALT6
Entrez Gene	9331(Human); 56386(Mouse)
SwissProt	Q9UBX8(Human); Q9WVK5(Mouse)

*AREX continuously optimizes our products. Webpage content may not reflect the latest updates. For inquiries, please contact info@arexbio.com or your local distributor.

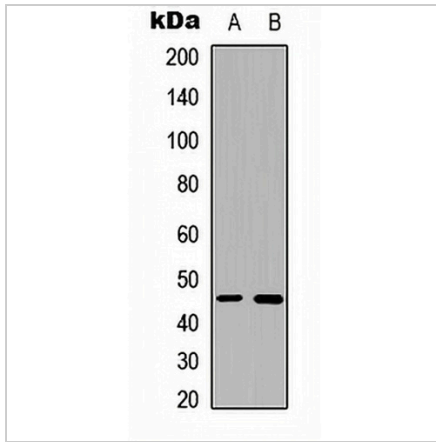
*Clone Number, Reactivity, Source/Host and Clonality can be found in the product name and Key Features section above.

DATASHEET

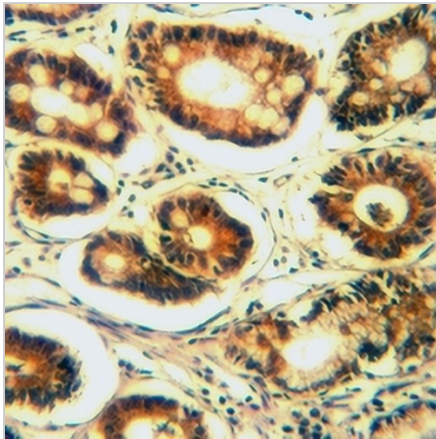
B4GALT6 Rabbit Polyclonal Antibody

CAT. NO. APA08885

DATA



Western blot analysis of B4GALT6 expression in A549 (A), NS-1 (B) whole cell lysates. (Predicted band size: 44 kD; Observed band size: 45 kD)



Immunohistochemical analysis of B4GALT6 staining in human stomach cancer formalin fixed paraffin embedded tissue section. The section was pre-treated using heat mediated antigen retrieval with sodium citrate buffer (pH 6.0). The section was then incubated with the antibody at room temperature and detected using an HRP conjugated compact polymer system. DAB was used as the chromogen. The section was then counterstained with haematoxylin and mounted with DPX.

STORAGE

Store at 4°C short term. For long term storage, store at -20°C, avoiding freeze/thaw cycles.

NOTE

For Research Use Only. Not for diagnostic, therapeutics, prophylactic or in vivo use.