

**DATASHEET**

**BAMBI Rabbit Polyclonal Antibody**

CAT. NO. APA08887

**KEY FEATURES**

Target	BAMBI	Source / Host	Rabbit
Reactivity	Human, Mouse, Rat, Bovine, Chicken, Dog, Sheep	Clonality	Polyclonal
Applications	WB	Conjugation	Unconjugated
Form / Buffer	Liquid in 0.42% Potassium phosphate, 0.87% Sodium chloride, pH 7.3, 30% glycerol, and 0.01% sodium azide.		Storage at -20°C

**BACKGROUND**

Negatively regulates TGF-beta signaling.

**APPLICATION**

To ensure optimal assay performance, AREX recommends conducting reagent titration tailored to each testing system for optimal detection results.

WB	1:500 - 1:1000
----	----------------

\*Results are sample-specific. Please refer to your local assay conditions and test parameters for reference.

**PRODUCT OVERVIEW**

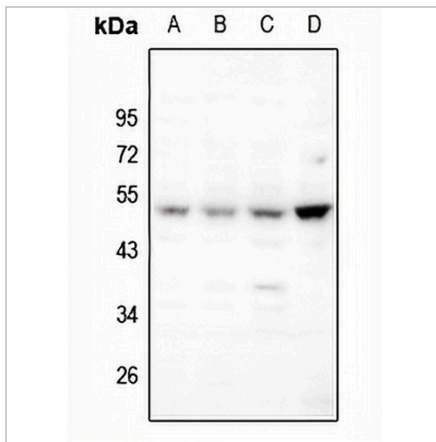
Description	Rabbit polyclonal antibody to BAMBI
Specificity	Recognizes endogenous levels of BAMBI protein.
Antibody Type	Primary antibody
Immunogen	KLH-conjugated synthetic peptide encompassing a sequence within the center region of human BAMBI. The exact sequence is proprietary.
Purification	The antibody was purified by immunogen affinity chromatography.
Molecular Weight	Predicted: 29 kD; Observed: 50 kD
Form/Buffer	Liquid in 0.42% Potassium phosphate, 0.87% Sodium chloride, pH 7.3, 30% glycerol, and 0.01% sodium azide.
Alternative Names	NMA; BMP and activin membrane-bound inhibitor homolog; Non-metastatic gene A protein; Putative transmembrane protein NMA
Gene Symbol	BAMBI
Entrez Gene	25805(Human); 68010(Mouse); 83837(Rat)
SwissProt	Q13145(Human); Q9D0L6(Mouse); Q91XN4(Rat)

\*AREX continuously optimizes our products. Webpage content may not reflect the latest updates. For inquiries, please contact [info@arexbio.com](mailto:info@arexbio.com) or your local distributor.

\*Clone Number, Reactivity, Source/Host and Clonality can be found in the product name and Key Features section above.

**DATASHEET****BAMBI Rabbit Polyclonal Antibody**

CAT. NO. APA08887

**DATA**

Western blot analysis of BAMBI expression in A375 (A), HEK293T (B), H1792 (C), mouse embryo (D) whole cell lysates. (Predicted band size: 29 kD; Observed band size: 50 kD)

**STORAGE**

Store at 4°C short term. For long term storage, store at -20°C, avoiding freeze/thaw cycles.

**NOTE**

For Research Use Only. Not for diagnostic, therapeutics, prophylactic or in vivo use.