

DATASHEET

BGT-1 Rabbit Polyclonal Antibody

CAT. NO. APA08889

KEY FEATURES

Target	BGT-1	Source / Host	Rabbit
Reactivity	Human, Mouse, Rat	Clonality	Polyclonal
Applications	WB, IF/ICC	Conjugation	Unconjugated
Form / Buffer	Liquid in 0.42% Potassium phosphate, 0.87% Sodium chloride, pH 7.3, 30% glycerol, and 0.01% sodium azide.		Storage at -20°C

BACKGROUND

Transporter that mediates cellular uptake of betaine and GABA in a sodium- and chloride-dependent process . May have a role in regulation of GABAergic transmission in the brain through the reuptake of GABA into presynaptic terminals, as well as in osmotic regulation. Probably also involved in renal and hepatic osmotic regulation .

APPLICATION

To ensure optimal assay performance, AREX recommends conducting reagent titration tailored to each testing system for optimal detection results.

WB	1:500 - 1:1000
IF/ICC	1:50 - 1:200

*Results are sample-specific. Please refer to your local assay conditions and test parameters for reference.

PRODUCT OVERVIEW

Description	Rabbit polyclonal antibody to BGT-1
Specificity	Recognizes endogenous levels of BGT-1 protein.
Antibody Type	Primary antibody
Immunogen	KLH-conjugated synthetic peptide encompassing a sequence within the C-term region of human BGT-1. The exact sequence is proprietary.
Purification	The antibody was purified by immunogen affinity chromatography.
Molecular Weight	Predicted: 69 kD; Observed: 75 kD
Form/Buffer	Liquid in 0.42% Potassium phosphate, 0.87% Sodium chloride, pH 7.3, 30% glycerol, and 0.01% sodium azide.
Alternative Names	Sodium- and chloride-dependent betaine transporter; BGT-1; Na(+)/Cl(-) betaine/GABA transporter; Solute carrier family 6 member 12
Gene Symbol	SLC6A12
Entrez Gene	6539(Human); 50676(Rat)
SwissProt	P48065(Human); P31651(Mouse); P48056(Rat)

*AREX continuously optimizes our products. Webpage content may not reflect the latest updates. For inquiries, please contact info@arexbio.com or your local distributor.

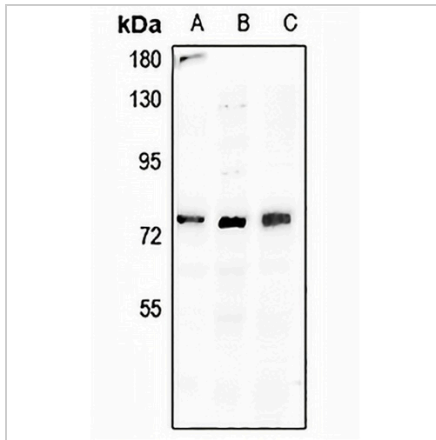
*Clone Number, Reactivity, Source/Host and Clonality can be found in the product name and Key Features section above.

DATASHEET

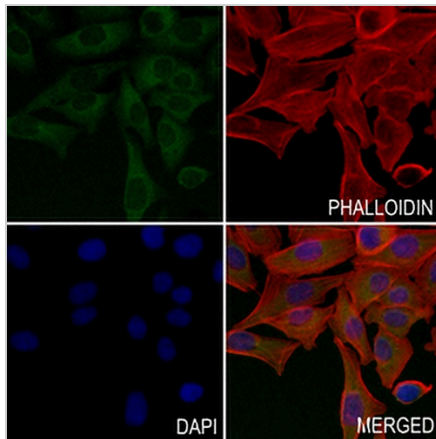
BGT-1 Rabbit Polyclonal Antibody

CAT. NO. APA08889

DATA



Western blot analysis of BGT-1 expression in NIH3T3 (A), LO2 (B), SGC7901 (C) whole cell lysates. (Predicted band size: 69 kD; Observed band size: 75 kD)



Immunofluorescent analysis of BGT-1 staining in MCF7 cells. Formalin-fixed cells were permeabilized with 0.1% Triton X-100 in TBS for 5-10 minutes and blocked with 3% BSA-PBS for 30 minutes at room temperature. Cells were probed with the primary antibody in 3% BSA-PBS and incubated overnight at 4 °C in a humidified chamber. Cells were washed with PBST and incubated with a AREX® Fluor 488 -conjugated secondary antibody (green) in PBS at room temperature in the dark. Phalloidin - AREX® Fluor 594 was used to stain Actin filaments (red). DAPI was used to stain the cell nuclei (blue).

STORAGE

Store at 4°C short term. For long term storage, store at -20°C, avoiding freeze/thaw cycles.

NOTE

For Research Use Only. Not for diagnostic, therapeutics, prophylactic or in vivo use.