

**DATASHEET**

**CABP2 Rabbit Polyclonal Antibody**

CAT. NO. APA08892

**KEY FEATURES**

Target	CABP2	Source / Host	Rabbit
Reactivity	Human, Mouse, Rat, Bovine, Monkey	Clonality	Polyclonal
Applications	WB	Conjugation	Unconjugated
Form / Buffer	Liquid in 0.42% Potassium phosphate, 0.87% Sodium chloride, pH 7.3, 30% glycerol, and 0.01% sodium azide.		Storage at -20°C

**BACKGROUND**

Required for sound encoding at inner hair cells (IHCs) synapses, likely via inhibition of the inactivation of voltage-gated calcium channel of type 1.3 (Cav1.3) in the IHCs synapses, likely via inhibition of the inactivation of voltage-gated calcium channel of type 1.3 (Cav1.3) in the IHCs . Required for the normal transfer of light signals through the retina .

**APPLICATION**

To ensure optimal assay performance, AREX recommends conducting reagent titration tailored to each testing system for optimal detection results.

WB	1:500 - 1:1000
----	----------------

\*Results are sample-specific. Please refer to your local assay conditions and test parameters for reference.

**PRODUCT OVERVIEW**

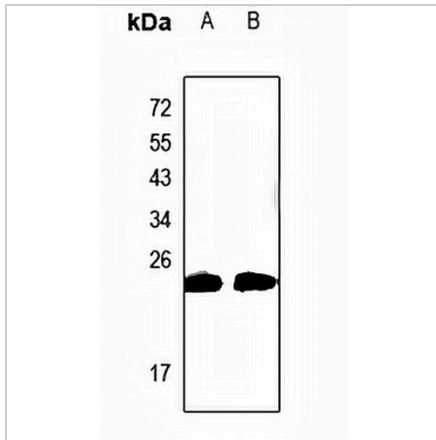
Description	Rabbit polyclonal antibody to CABP2
Specificity	Recognizes endogenous levels of CABP2 protein.
Antibody Type	Primary antibody
Immunogen	KLH-conjugated synthetic peptide encompassing a sequence within the center region of human CABP2. The exact sequence is proprietary.
Purification	The antibody was purified by immunogen affinity chromatography.
Molecular Weight	Predicted: 24 kD; Observed: 24 kD
Form/Buffer	Liquid in 0.42% Potassium phosphate, 0.87% Sodium chloride, pH 7.3, 30% glycerol, and 0.01% sodium azide.
Alternative Names	Calcium-binding protein 2; CaBP2
Gene Symbol	CABP2
Entrez Gene	51475(Human); 29866(Mouse)
SwissProt	Q9NPB3(Human); Q9JLK4(Mouse)

\*AREX continuously optimizes our products. Webpage content may not reflect the latest updates. For inquiries, please contact [info@arexbio.com](mailto:info@arexbio.com) or your local distributor.

\*Clone Number, Reactivity, Source/Host and Clonality can be found in the product name and Key Features section above.

**DATASHEET****CABP2 Rabbit Polyclonal Antibody**

CAT. NO. APA08892

**DATA**

Western blot analysis of CABP2 expression in mouse eyes (A), rat eyes (B) whole cell lysates. (Predicted band size: 24 kD; Observed band size: 24 kD)

**STORAGE**

Store at 4°C short term. For long term storage, store at -20°C, avoiding freeze/thaw cycles.

**NOTE**

For Research Use Only. Not for diagnostic, therapeutics, prophylactic or in vivo use.