

**DATASHEET**

**CALML6 Rabbit Polyclonal Antibody**

CAT. NO. APA08894

**KEY FEATURES**

Target	CALML6	Source / Host	Rabbit
Reactivity	Human	Clonality	Polyclonal
Applications	WB	Conjugation	Unconjugated
Form / Buffer	Liquid in 0.42% Potassium phosphate, 0.87% Sodium chloride, pH 7.3, 30% glycerol, and 0.01% sodium azide.		Storage at -20°C

**BACKGROUND**

Calmodulin-like protein 6 (CALML6), also known as Calglandulin-like protein. Belongs to the calmodulin family. Calglandulin subfamily Subcellular location: Cytoplasm; Nucleus Tissue specificity: Expressed in prostate, thymus, heart, skeleton muscle, bone marrow and ovary

**APPLICATION**

To ensure optimal assay performance, AREX recommends conducting reagent titration tailored to each testing system for optimal detection results.

WB	1:500 - 1:1000
----	----------------

\*Results are sample-specific. Please refer to your local assay conditions and test parameters for reference.

**PRODUCT OVERVIEW**

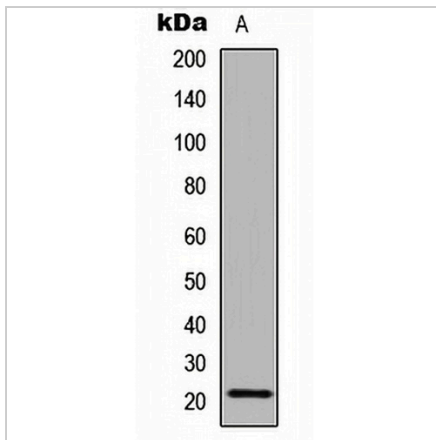
Description	Rabbit polyclonal antibody to CALML6
Specificity	Recognizes endogenous levels of CALML6 protein.
Antibody Type	Primary antibody
Immunogen	KLH-conjugated synthetic peptide encompassing a sequence within the center region of human CALML6. The exact sequence is proprietary.
Purification	The antibody was purified by immunogen affinity chromatography.
Molecular Weight	Predicted: 20 kD; Observed: 21 kD
Form/Buffer	Liquid in 0.42% Potassium phosphate, 0.87% Sodium chloride, pH 7.3, 30% glycerol, and 0.01% sodium azide.
Alternative Names	CAGLP; CALGP; Calmodulin-like protein 6; Calglandulin-like protein
Gene Symbol	CALML6
Entrez Gene	163688(Human)
SwissProt	Q8TD86(Human)

\*AREX continuously optimizes our products. Webpage content may not reflect the latest updates. For inquiries, please contact [info@arexbio.com](mailto:info@arexbio.com) or your local distributor.

\*Clone Number, Reactivity, Source/Host and Clonality can be found in the product name and Key Features section above.

**DATASHEET****CALML6 Rabbit Polyclonal Antibody**

CAT. NO. APA08894

**DATA****STORAGE**

Store at 4°C short term. For long term storage, store at -20°C, avoiding freeze/thaw cycles.

**NOTE**

For Research Use Only. Not for diagnostic, therapeutics, prophylactic or in vivo use.