

DATASHEET

Carboxypeptidase D Rabbit Polyclonal Antibody

CAT. NO. APA08898

KEY FEATURES

Target	Carboxypeptidase D	Source / Host	Rabbit
Reactivity	Human, Mouse, Rat	Clonality	Polyclonal
Applications	WB	Conjugation	Unconjugated
Form / Buffer	Liquid in 0.42% Potassium phosphate, 0.87% Sodium chloride, pH 7.3, 30% glycerol, and 0.01% sodium azide.		Storage at -20°C

BACKGROUND

Functions in the processing of proteins and peptides in the secretory pathway. Mechanistically, cleaves exclusively C-terminal basic residues. By removing terminal residues, can modulate the activity, stability, and receptor-binding properties of bioactive peptides.

APPLICATION

To ensure optimal assay performance, AREX recommends conducting reagent titration tailored to each testing system for optimal detection results.

WB	1:500 - 1:1000
----	----------------

*Results are sample-specific. Please refer to your local assay conditions and test parameters for reference.

PRODUCT OVERVIEW

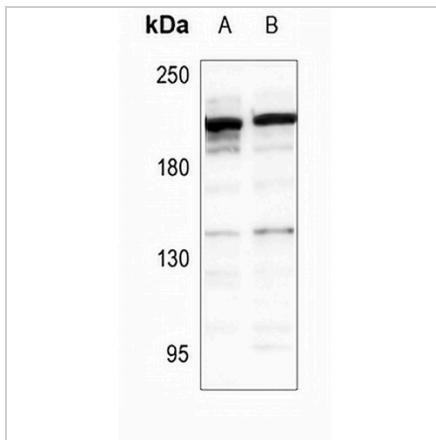
Description	Rabbit polyclonal antibody to Carboxypeptidase D
Specificity	Recognizes endogenous levels of Carboxypeptidase D protein.
Antibody Type	Primary antibody
Immunogen	KLH-conjugated synthetic peptide encompassing a sequence within the center region of human Carboxypeptidase D. The exact sequence is proprietary.
Purification	The antibody was purified by immunogen affinity chromatography.
Molecular Weight	Predicted: 152 kD; Observed: 200 kD
Form/Buffer	Liquid in 0.42% Potassium phosphate, 0.87% Sodium chloride, pH 7.3, 30% glycerol, and 0.01% sodium azide.
Alternative Names	Carboxypeptidase D; Metallo-carboxypeptidase D; gp180
Gene Symbol	CPD
Entrez Gene	1362(Human); 12874(Mouse); 25306(Rat)
SwissProt	O75976(Human); O89001(Mouse); Q9JHW1(Rat)

*AREX continuously optimizes our products. Webpage content may not reflect the latest updates. For inquiries, please contact info@arexbio.com or your local distributor.

*Clone Number, Reactivity, Source/Host and Clonality can be found in the product name and Key Features section above.

DATASHEET**Carboxypeptidase D Rabbit Polyclonal Antibody**

CAT. NO. APA08898

DATA

Western blot analysis of Carboxypeptidase D expression in U87MG (A), SGC7901 (B) whole cell lysates. (Predicted band size: 152 kD; Observed band size: 200 kD)

STORAGE

Store at 4°C short term. For long term storage, store at -20°C, avoiding freeze/thaw cycles.

NOTE

For Research Use Only. Not for diagnostic, therapeutics, prophylactic or in vivo use.