

DATASHEET

DDEF2 Rabbit Polyclonal Antibody

CAT. NO. APA08931

KEY FEATURES

Target	DDEF2	Source / Host	Rabbit
Reactivity	Human, Mouse, Rat	Clonality	Polyclonal
Applications	WB	Conjugation	Unconjugated
Form / Buffer	Liquid in 0.42% Potassium phosphate, 0.87% Sodium chloride, pH 7.3, 30% glycerol, and 0.01% sodium azide.		Storage at-20°C

BACKGROUND

Activates the small GTPases ARF1, ARF5 and ARF6. Regulates the formation of post-Golgi vesicles and modulates constitutive secretion. Modulates phagocytosis mediated by Fc gamma receptor and ARF6. Modulates PXN recruitment to focal contacts and cell migration.

APPLICATION

To ensure optimal assay performance, AREX recommends conducting reagent titration tailored to each testing system for optimal detection results.

WB	1:500 - 1:1000
----	----------------

*Results are sample-specific. Please refer to your local assay conditions and test parameters for reference.

PRODUCT OVERVIEW

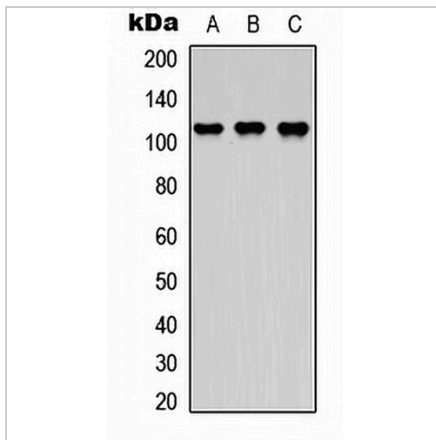
Description	Rabbit polyclonal antibody to DDEF2
Specificity	Recognizes endogenous levels of DDEF2 protein.
Antibody Type	Primary antibody
Immunogen	KLH-conjugated synthetic peptide encompassing a sequence within the center region of human DDEF2. The exact sequence is proprietary.
Purification	The antibody was purified by immunogen affinity chromatography.
Molecular Weight	Predicted: 111 kD; Observed: 111 kD
Form/Buffer	Liquid in 0.42% Potassium phosphate, 0.87% Sodium chloride, pH 7.3, 30% glycerol, and 0.01% sodium azide.
Alternative Names	DDEF2; KIAA0400; Arf-GAP with SH3 domain, ANK repeat and PH domain-containing protein 2; Development and differentiation-enhancing factor 2; Paxillin-associated protein with ARF GAP activity 3; PAG3; Pyk2 C-terminus-associated protein; PAP
Gene Symbol	ASAP2
Entrez Gene	8853(Human); 211914(Mouse)
SwissProt	O43150(Human); Q7SIG6(Mouse)

*AREX continuously optimizes our products. Webpage content may not reflect the latest updates. For inquiries, please contact info@arexbio.com or your local distributor.

*Clone Number, Reactivity, Source/Host and Clonality can be found in the product name and Key Features section above.

DATASHEET**DDEF2 Rabbit Polyclonal Antibody**

CAT. NO. APA08931

DATA

Western blot analysis of DDEF2 expression in HEK293T (A), NS-1 (B), H9C2 (C) whole cell lysates. (Predicted band size: 111 kD; Observed band size: 111 kD)

STORAGE

Store at 4°C short term. For long term storage, store at -20°C, avoiding freeze/thaw cycles.

NOTE

For Research Use Only. Not for diagnostic, therapeutics, prophylactic or in vivo use.