

DATASHEET

EIF2S2 (Phospho-S67) Rabbit Polyclonal Antibody

CAT. NO. APA08939

KEY FEATURES

Target	EIF2S2 (Phospho-S67)	Source / Host	Rabbit
Reactivity	Human, Mouse, Rat, Monkey	Clonality	Polyclonal
Applications	WB, IHC	Conjugation	Unconjugated
Form / Buffer	Liquid in 0.42% Potassium phosphate, 0.87% Sodium chloride, pH 7.3, 30% glycerol, and 0.01% sodium azide.	Storage	at-20°C

BACKGROUND

Component of the eIF2 complex that functions in the early steps of protein synthesis by forming a ternary complex with GTP and initiator tRNA. This complex binds to a 40S ribosomal subunit, followed by mRNA binding to form the 43S pre-initiation complex (43S PIC). Junction of the 60S ribosomal subunit to form the 80S initiation complex is preceded by hydrolysis of the GTP bound to eIF2 and release of an eIF2-GDP binary complex. In order for eIF2 to recycle and catalyze another round of initiation, the GDP bound to eIF2 must exchange with GTP by way of a reaction catalyzed by eIF2B.

APPLICATION

To ensure optimal assay performance, AREX recommends conducting reagent titration tailored to each testing system for optimal detection results.

WB	1:500 - 1:1000
IHC	1:50 - 1:100

*Results are sample-specific. Please refer to your local assay conditions and test parameters for reference.

PRODUCT OVERVIEW

Description	Rabbit polyclonal antibody to EIF2S2 (Phospho-S67)
Specificity	Recognizes endogenous levels of EIF2S2 protein only when phosphorylated at S67.
Antibody Type	Primary antibody
Immunogen	KLH-conjugated synthetic phosphopeptide corresponding to residues surrounding S67 of human EIF2S2 protein. The exact sequence is proprietary.
Purification	The antibody was purified by immunogen affinity chromatography.
Molecular Weight	Predicted: 38 kD; Observed: 45 kD
Form/Buffer	Liquid in 0.42% Potassium phosphate, 0.87% Sodium chloride, pH 7.3, 30% glycerol, and 0.01% sodium azide.
Alternative Names	EIF2B; Eukaryotic translation initiation factor 2 subunit 2; Eukaryotic translation initiation factor 2 subunit beta; eIF-2-beta
Gene Symbol	EIF2S2
Entrez Gene	8894(Human); 67204(Mouse)
SwissProt	P20042(Human); Q99L45(Mouse)

*AREX continuously optimizes our products. Webpage content may not reflect the latest updates. For inquiries, please contact info@arexbio.com or your local distributor.

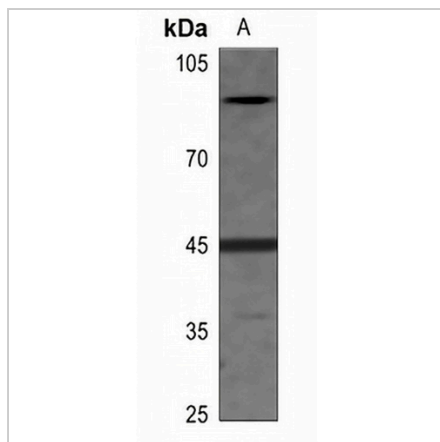
*Clone Number, Reactivity, Source/Host and Clonality can be found in the product name and Key Features section above.

DATASHEET

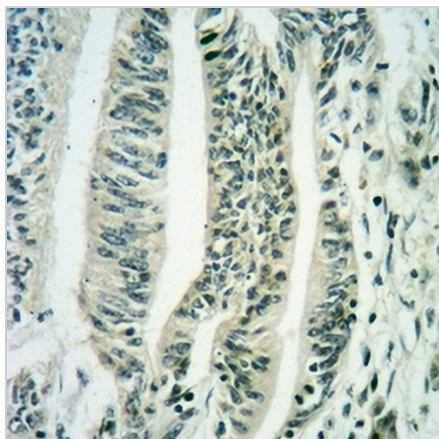
EIF2S2 (Phospho-S67) Rabbit Polyclonal Antibody

CAT. NO. APA08939

DATA



Western blot analysis of EIF2S2 (Phospho-S67) expression in DLD (A) whole cell lysates. (Predicted band size: 38 kD; Observed band size: 45 kD)



Immunohistochemical analysis of EIF2S2 (Phospho-S67) staining in human colorectal cancer formalin fixed paraffin embedded tissue section. The section was pre-treated using heat mediated antigen retrieval with sodium citrate buffer (pH 6.0). The section was then incubated with the antibody at room temperature and detected using an HRP conjugated compact polymer system. DAB was used as the chromogen. The section was then counterstained with haematoxylin and mounted with DPX.

STORAGE

Store at 4°C short term. For long term storage, store at -20°C, avoiding freeze/thaw cycles.

NOTE

For Research Use Only. Not for diagnostic, therapeutics, prophylactic or in vivo use.