

**DATASHEET**

**Fractalkine Rabbit Polyclonal Antibody**

CAT. NO. APA08959

**KEY FEATURES**

Target	Fractalkine	Source / Host	Rabbit
Reactivity	Human, Mouse, Rat, Monkey	Clonality	Polyclonal
Applications	WB, IF/ICC	Conjugation	Unconjugated
Form / Buffer	Liquid in 0.42% Potassium phosphate, 0.87% Sodium chloride, pH 7.3, 30% glycerol, and 0.01% sodium azide.		Storage at-20°C

**BACKGROUND**

Chemokine that acts as a ligand for both CX3CR1 and integrins ITGA5:ITGB3 and ITGA4:ITGB1 . The CX3CR1-CX3CL1 signaling exerts distinct functions in different tissue compartments, such as immune response, inflammation, cell adhesion and chemotaxis . Regulates leukocyte adhesion and migration processes at the endothelium . Can activate integrins in both a CX3CR1-dependent and CX3CR1-independent manner . In the presence of CX3CR1, activates integrins by binding to the classical ligand-binding site (site 1) in integrins . In the absence of CX3CR1, binds to a second site (site 2) in integrins which is distinct from site 1 and enhances the binding of other integrin ligands to site 1 .

**APPLICATION**

To ensure optimal assay performance, AREX recommends conducting reagent titration tailored to each testing system for optimal detection results.

WB	1:500 - 1:1000
IF/ICC	1:50 - 1:200

\*Results are sample-specific. Please refer to your local assay conditions and test parameters for reference.

**PRODUCT OVERVIEW**

Description	Rabbit polyclonal antibody to Fractalkine
Specificity	Recognizes endogenous levels of Fractalkine protein.
Antibody Type	Primary antibody
Immunogen	KLH-conjugated synthetic peptide encompassing a sequence within the C-term region of human Fractalkine. The exact sequence is proprietary.
Purification	The antibody was purified by immunogen affinity chromatography.
Molecular Weight	Predicted: 42 kD; Observed: 80 kD
Form/Buffer	Liquid in 0.42% Potassium phosphate, 0.87% Sodium chloride, pH 7.3, 30% glycerol, and 0.01% sodium azide.
Alternative Names	FKN; NTT; SCYD1; Fractalkine; C-X3-C motif chemokine 1; CX3C membrane-anchored chemokine; Neurotactin; Small-inducible cytokine D1
Gene Symbol	CX3CL1
Entrez Gene	6376(Human); 20312(Mouse); 89808(Rat)
SwissProt	P78423(Human); O35188(Mouse); O55145(Rat)

\*AREX continuously optimizes our products. Webpage content may not reflect the latest updates. For inquiries, please contact [info@arex.bio](mailto:info@arex.bio) or your local distributor.

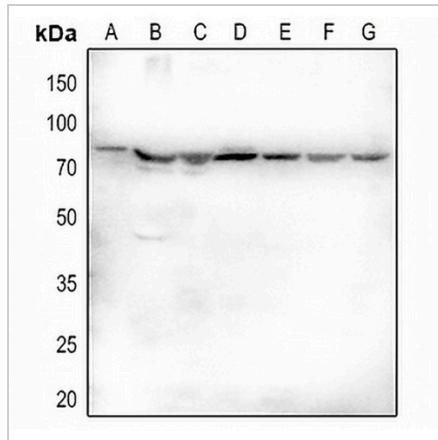
\*Clone Number, Reactivity, Source/Host and Clonality can be found in the product name and Key Features section above.

**DATASHEET**

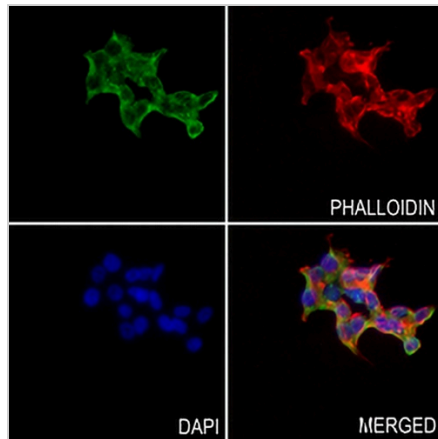
**Fractalkine Rabbit Polyclonal Antibody**

CAT. NO. APA08959

**DATA**



Western blot analysis of Fractalkine expression in MCF7 (A), NIH3T3 (B), PC12 (C) whole cell lysates. (Predicted band size: 42 kD; Observed band size: 80 kD)



Immunofluorescent analysis of Fractalkine staining in 22RV1 cells. Formalin-fixed cells were permeabilized with 0.1% Triton X-100 in TBS for 5-10 minutes and blocked with 3% BSA-PBS for 30 minutes at room temperature. Cells were probed with the primary antibody in 3% BSA-PBS and incubated overnight at 4 °C in a humidified chamber. Cells were washed with PBST and incubated with a AREX® Fluor 488 -conjugated secondary antibody (green) in PBS at room temperature in the dark. Phalloidin - AREX® Fluor 594 was used to stain Actin filaments (red). DAPI was used to stain the cell nuclei (blue).

**STORAGE**

Store at 4°C short term. For long term storage, store at -20°C, avoiding freeze/thaw cycles.

**NOTE**

For Research Use Only. Not for diagnostic, therapeutics, prophylactic or in vivo use.