

DATASHEET

GCP2 Rabbit Polyclonal Antibody

CAT. NO. APA08966

KEY FEATURES

Target	GCP2	Source / Host	Rabbit
Reactivity	Human, Mouse, Rat	Clonality	Polyclonal
Applications	WB, IF/ICC	Conjugation	Unconjugated
Form / Buffer	Liquid in 0.42% Potassium phosphate, 0.87% Sodium chloride, pH 7.3, 30% glycerol, and 0.01% sodium azide.		Storage at -20°C

BACKGROUND

Component of the gamma-tubulin ring complex (gTuRC) which mediates microtubule nucleation which mediates microtubule nucleation . The gTuRC regulates the minus-end nucleation of alpha-beta tubulin heterodimers that grow into microtubule protofilaments, a critical step in centrosome duplication and spindle formation . Plays a role in neuronal migration .

APPLICATION

To ensure optimal assay performance, AREX recommends conducting reagent titration tailored to each testing system for optimal detection results.

WB	1:500 - 1:1000
IF/ICC	1:50 - 1:200

*Results are sample-specific. Please refer to your local assay conditions and test parameters for reference.

PRODUCT OVERVIEW

Description	Rabbit polyclonal antibody to GCP2
Specificity	Recognizes endogenous levels of GCP2 protein.
Antibody Type	Primary antibody
Immunogen	KLH-conjugated synthetic peptide encompassing a sequence within the center region of human GCP2. The exact sequence is proprietary.
Purification	The antibody was purified by immunogen affinity chromatography.
Molecular Weight	Predicted: 102 kD; Observed: 103 kD
Form/Buffer	Liquid in 0.42% Potassium phosphate, 0.87% Sodium chloride, pH 7.3, 30% glycerol, and 0.01% sodium azide.
Alternative Names	GCP2; Gamma-tubulin complex component 2; GCP-2; hGCP2; Gamma-ring complex protein 103 kDa; h103p; hGrip103; Spindle pole body protein Spc97 homolog; hSpc97
Gene Symbol	TUBGCP2
Entrez Gene	10844(Human); 74237(Mouse)
SwissProt	Q9BSJ2(Human); Q921G8(Mouse)

*AREX continuously optimizes our products. Webpage content may not reflect the latest updates. For inquiries, please contact info@arex.bio or your local distributor.

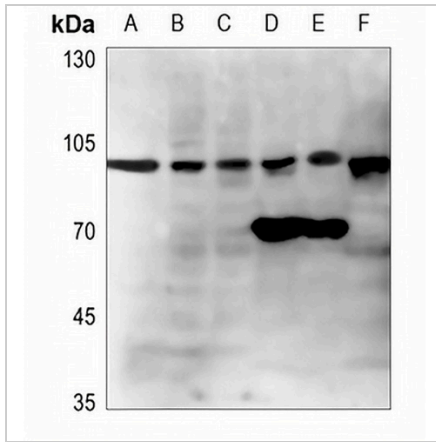
*Clone Number, Reactivity, Source/Host and Clonality can be found in the product name and Key Features section above.

DATASHEET

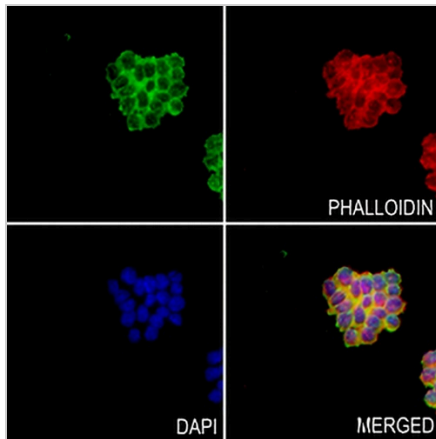
GCP2 Rabbit Polyclonal Antibody

CAT. NO. APA08966

DATA



Western blot analysis of GCP2 expression in HEK293T (A), A549 (B), H446 (C), mouse liver (D), mouse kidney (E), rat liver (F) whole cell lysates. (Predicted band size: 102 kD; Observed band size: 103 kD)



Immunofluorescent analysis of GCP2 staining in MDAMB231 cells. Formalin-fixed cells were permeabilized with 0.1% Triton X-100 in TBS for 5-10 minutes and blocked with 3% BSA-PBS for 30 minutes at room temperature. Cells were probed with the primary antibody in 3% BSA-PBS and incubated overnight at 4 °C in a humidified chamber. Cells were washed with PBST and incubated with a AREX® Fluor 488 -conjugated secondary antibody (green) in PBS at room temperature in the dark. Phalloidin - AREX® Fluor 594 was used to stain Actin filaments (red). DAPI was used to stain the cell nuclei (blue).

STORAGE

Store at 4°C short term. For long term storage, store at -20°C, avoiding freeze/thaw cycles.

NOTE

For Research Use Only. Not for diagnostic, therapeutics, prophylactic or in vivo use.