

DATASHEET
GGT5 HC Rabbit Polyclonal Antibody
CAT. NO. APA08967
KEY FEATURES

Target	GGT5 HC	Source / Host	Rabbit
Reactivity	Human, Mouse, Rat, Monkey	Clonality	Polyclonal
Applications	WB, IF/ICC	Conjugation	Unconjugated
Form / Buffer	Liquid in 0.42% Potassium phosphate, 0.87% Sodium chloride, pH 7.3, 30% glycerol, and 0.01% sodium azide.		Storage at -20°C

BACKGROUND

Cleaves the gamma-glutamyl bond of extracellular glutathione tripeptide (gamma-Glu-Cys-Gly) and certain glutathione conjugates and certain glutathione conjugates. Hydrolyzes glutathione releasing L-Glu and Cys-Gly dipeptide which is further metabolized to maintain extracellular cysteine levels but also to provide cysteine necessary for intracellular glutathione synthesis. Among glutathione-S-conjugates metabolizes leukotriene C4 (LTC4) and S-geranylgeranyl-glutathione (GGG), but is inactive toward gamma-glutamyl leucine. Converts extracellular LTC4 to LTD4 during acute inflammatory response. Acts as a negative regulator of GGG bioactivity.

APPLICATION

To ensure optimal assay performance, AREX recommends conducting reagent titration tailored to each testing system for optimal detection results.

WB	1:500 - 1:1000
IF/ICC	1:50 - 1:200

*Results are sample-specific. Please refer to your local assay conditions and test parameters for reference.

PRODUCT OVERVIEW

Description	Rabbit polyclonal antibody to GGT5 HC
Specificity	Recognizes endogenous levels of GGT5 HC protein.
Antibody Type	Primary antibody
Immunogen	KLH-conjugated synthetic peptide encompassing a sequence within the center region of human GGT5 HC. The exact sequence is proprietary.
Purification	The antibody was purified by immunogen affinity chromatography.
Molecular Weight	Predicted: 62 kD; Observed: 62 kD
Form/Buffer	Liquid in 0.42% Potassium phosphate, 0.87% Sodium chloride, pH 7.3, 30% glycerol, and 0.01% sodium azide.
Alternative Names	GGTLA1; Gamma-glutamyltransferase 5; GGT 5; Gamma-glutamyl transpeptidase-related enzyme; GGT-rel; Gamma-glutamyltransferase-like activity 1; Gamma-glutamyltranspeptidase 5; Glutathione hydrolase 5; Leukotriene-C4 hydrolase
Gene Symbol	GGT5
Entrez Gene	2687(Human); 23887(Mouse)
SwissProt	P36269(Human); Q9Z2A9(Mouse); Q9QWE9(Rat)

*AREX continuously optimizes our products. Webpage content may not reflect the latest updates. For inquiries, please contact info@arexbio.com or your local distributor.

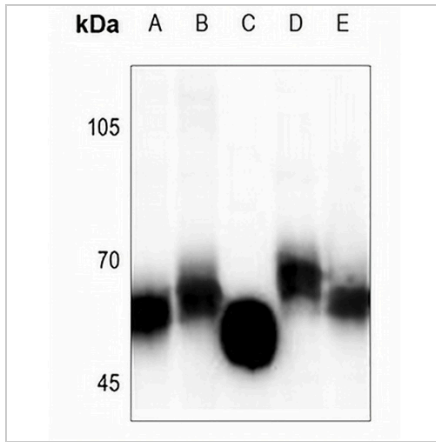
*Clone Number, Reactivity, Source/Host and Clonality can be found in the product name and Key Features section above.

DATASHEET

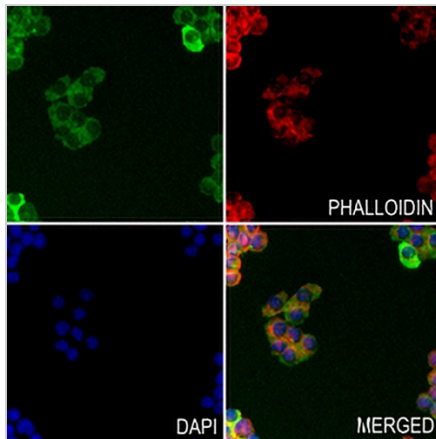
GGT5 HC Rabbit Polyclonal Antibody

CAT. NO. APA08967

DATA



Western blot analysis of GGT5 HC expression in H460 (A), LO2 (B), mouse kidney (C), MCF7 (D), HuT78 (E) whole cell lysates. (Predicted band size: 62 kD; Observed band size: 62 kD)



Immunofluorescent analysis of GGT5 HC staining in MDAMB231 cells. Formalin-fixed cells were permeabilized with 0.1% Triton X-100 in TBS for 5-10 minutes and blocked with 3% BSA-PBS for 30 minutes at room temperature. Cells were probed with the primary antibody in 3% BSA-PBS and incubated overnight at 4 °C in a humidified chamber. Cells were washed with PBST and incubated with a AREX® Fluor 488 -conjugated secondary antibody (green) in PBS at room temperature in the dark. Phalloidin - AREX® Fluor 594 was used to stain Actin filaments (red). DAPI was used to stain the cell nuclei (blue).

STORAGE

Store at 4°C short term. For long term storage, store at -20°C, avoiding freeze/thaw cycles.

NOTE

For Research Use Only. Not for diagnostic, therapeutics, prophylactic or in vivo use.