

DATASHEET

HCAP (Phospho-S1083) Rabbit Polyclonal Antibody

CAT. NO. APA08976

KEY FEATURES

Target	HCAP (Phospho-S1083)	Source / Host	Rabbit
Reactivity	Human, Mouse, Rat, Bovine	Clonality	Polyclonal
Applications	WB	Conjugation	Unconjugated
Form / Buffer	Liquid in 0.42% Potassium phosphate, 0.87% Sodium chloride, pH 7.3, 30% glycerol, and 0.01% sodium azide.	Storage	at-20°C

BACKGROUND

Central component of cohesin, a complex required for chromosome cohesion during the cell cycle. The cohesin complex may form a large proteinaceous ring within which sister chromatids can be trapped. At anaphase, the complex is cleaved and dissociates from chromatin, allowing sister chromatids to segregate. Cohesion is coupled to DNA replication and is involved in DNA repair. The cohesin complex also plays an important role in spindle pole assembly during mitosis and in chromosomes movement.

APPLICATION

To ensure optimal assay performance, AREX recommends conducting reagent titration tailored to each testing system for optimal detection results.

WB	1:500 - 1:1000
----	----------------

*Results are sample-specific. Please refer to your local assay conditions and test parameters for reference.

PRODUCT OVERVIEW

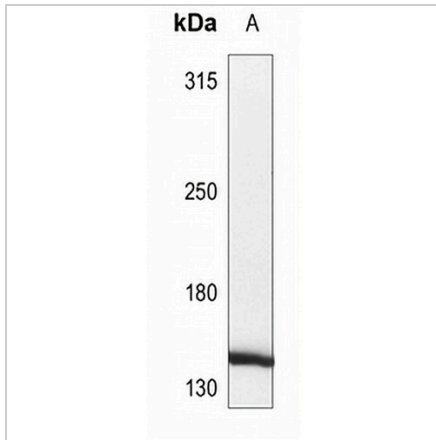
Description	Rabbit polyclonal antibody to HCAP (Phospho-S1083)
Specificity	Recognizes endogenous levels of HCAP protein only when phosphorylated at S1083.
Antibody Type	Primary antibody
Immunogen	KLH-conjugated synthetic phosphopeptide corresponding to residues surrounding S1083 of human HCAP protein. The exact sequence is proprietary.
Purification	The antibody was purified by immunogen affinity chromatography.
Molecular Weight	Predicted: 141 kD; Observed: 140 kD
Form/Buffer	Liquid in 0.42% Potassium phosphate, 0.87% Sodium chloride, pH 7.3, 30% glycerol, and 0.01% sodium azide.
Alternative Names	BAM; BMH; CSPG6; SMC3L1; Structural maintenance of chromosomes protein 3; SMC protein 3; SMC-3; Basement membrane-associated chondroitin proteoglycan; Bamacan; Chondroitin sulfate proteoglycan 6; Chromosome-associated polypeptide; hCAP
Gene Symbol	SMC3
Entrez Gene	9126(Human); 13006(Mouse)
SwissProt	Q9UQE7(Human); Q9CW03(Mouse); P97690(Rat)

*AREX continuously optimizes our products. Webpage content may not reflect the latest updates. For inquiries, please contact info@arexbio.com or your local distributor.

*Clone Number, Reactivity, Source/Host and Clonality can be found in the product name and Key Features section above.

DATASHEET**HCAP (Phospho-S1083) Rabbit Polyclonal Antibody**

CAT. NO. APA08976

DATA

Western blot analysis of HCAP (Phospho-S1083) expression in EC9706 (A) whole cell lysates. (Predicted band size: 141 kD; Observed band size: 140 kD)

STORAGE

Store at 4°C short term. For long term storage, store at -20°C, avoiding freeze/thaw cycles.

NOTE

For Research Use Only. Not for diagnostic, therapeutics, prophylactic or in vivo use.