

DATASHEET

HLA-A/B/C Rabbit Polyclonal Antibody

CAT. NO. APA08977

KEY FEATURES

Target	HLA-A/B/C	Source / Host	Rabbit
Reactivity	Human, Mouse, Rat, Rabbit	Clonality	Polyclonal
Applications	WB	Conjugation	Unconjugated
Form / Buffer	Liquid in 0.42% Potassium phosphate, 0.87% Sodium chloride, pH 7.3, 30% glycerol, and 0.01% sodium azide.		Storage at -20°C

BACKGROUND

Antigen-presenting major histocompatibility complex class I (MHCI) molecule. In complex with B2M/beta 2 microglobulin displays primarily viral and tumor-derived peptides on antigen-presenting cells for recognition by alpha-beta T cell receptor (TCR) on HLA-A-restricted CD8-positive T cells, guiding antigen-specific T cell immune response to eliminate infected or transformed cells molecule. In complex with B2M/beta 2 microglobulin displays primarily viral and tumor-derived peptides on antigen-presenting cells for recognition by alpha-beta T cell receptor (TCR) on HLA-A-restricted CD8-positive T cells, guiding antigen-specific T cell immune response to eliminate infected or transformed cells .

APPLICATION

To ensure optimal assay performance, AREX recommends conducting reagent titration tailored to each testing system for optimal detection results.

WB	1:500 - 1:1000
----	----------------

*Results are sample-specific. Please refer to your local assay conditions and test parameters for reference.

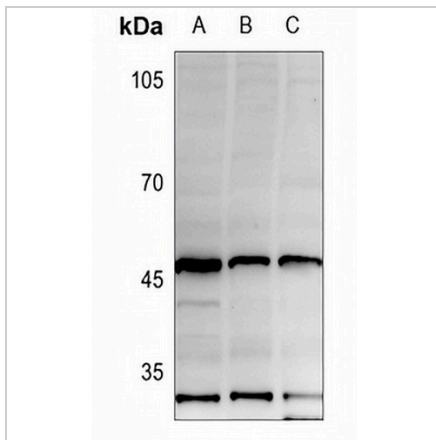
PRODUCT OVERVIEW

Description	Rabbit polyclonal antibody to HLA-A/B/C
Specificity	Recognizes endogenous levels of HLA-A/B/C protein.
Antibody Type	Primary antibody
Immunogen	KLH-conjugated synthetic peptide encompassing a sequence within the center region of human HLA-A/B/C. The exact sequence is proprietary.
Purification	The antibody was purified by immunogen affinity chromatography.
Molecular Weight	Predicted: 40 kD; Observed: 46 kD
Form/Buffer	Liquid in 0.42% Potassium phosphate, 0.87% Sodium chloride, pH 7.3, 30% glycerol, and 0.01% sodium azide.

Alternative Names	HLA-A; HLAA; HLA class I histocompatibility antigen, A-68 alpha chain; Aw-68; HLA class I histocompatibility antigen, A-28 alpha chain; MHC class I antigen A*68; HLA-A; HLAA; HLA class I histocompatibility antigen, A-2 alpha chain; MHC class I antigen A*2; HLA-A; HLAA; HLA class I histocompatibility antigen, A-3 alpha chain; MHC class I antigen A*3; HLA-A; HLAA; HLA class I histocompatibility antigen, A-24 alpha chain; Aw-24; HLA class I histocompatibility antigen, A-9 alpha chain; MHC class I antigen A*24; HLA-A; HLAA; HLA class I histocompatibility antigen, A-32 alpha chain; MHC class I antigen A*32; HLA-A; HLAA; HLA class I histocompatibility antigen, A-69 alpha chain; Aw-69; HLA class I histocompatibility antigen, A-28 alpha chain; MHC class I antigen A*69; HLA-A; HLAA; HLA class I histocompatibility antigen, A-11 alpha chain; MHC class I antigen A*11; HLA-A; HLAA; HLA class I histocompatibility antigen, A-31 alpha chain; MHC class I antigen A*31; HLA-A; HLAA; HLA class I histocompatibility antigen, A-25 alpha chain; HLA class I histocompatibility antigen, A-10 alpha chain; MHC class I antigen A*25; HLA-A; HLAA; HLA class I histocompatibility antigen, A-1 alpha chain; MHC class I antigen A*1; HLA-A; HLAA; HLA class I histocompatibility antigen, A-26 alpha chain; MHC class I antigen A*26; HLA-A; HLAA; HLA class I histocompatibility antigen, A-34 alpha chain; Aw-34; HLA class I histocompatibility antigen, A-10 alpha chain; MHC class I antigen A*34; HLA-A; HLAA; HLA class I
-------------------	---

DATASHEET**HLA-A/B/C Rabbit Polyclonal Antibody**

CAT. NO. APA08977

DATA

Western blot analysis of HLA-A/B/C expression in HEK293T (A), A549 (B), HepG2 (C) whole cell lysates. (Predicted band size: 40 kD; Observed band size: 46 kD)

STORAGE

Store at 4°C short term. For long term storage, store at -20°C, avoiding freeze/thaw cycles.

NOTE

For Research Use Only. Not for diagnostic, therapeutics, prophylactic or in vivo use.