

DATASHEET

IRF1 Rabbit Polyclonal Antibody

CAT. NO. APA08986

KEY FEATURES

Target	IRF1	Source / Host	Rabbit
Reactivity	Human, Mouse, Rat, Dog, Monkey, Pig	Clonality	Polyclonal
Applications	WB	Conjugation	Unconjugated
Form / Buffer	Liquid in 0.42% Potassium phosphate, 0.87% Sodium chloride, pH 7.3, 30% glycerol, and 0.01% sodium azide.		Storage at -20°C

BACKGROUND

Transcriptional regulator which displays a remarkable functional diversity in the regulation of cellular responses . Regulates transcription of IFN and IFN-inducible genes, host response to viral and bacterial infections, regulation of many genes expressed during hematopoiesis, inflammation, immune responses and cell proliferation and differentiation, regulation of the cell cycle and induction of growth arrest and programmed cell death following DNA damage . Stimulates both innate and acquired immune responses through the activation of specific target genes and can act as a transcriptional activator and repressor regulating target genes by binding to an interferon-stimulated response element (ISRE) in their promoters . Has an essential role in IFN- γ -dependent immunity to mycobacteria .

APPLICATION

To ensure optimal assay performance, AREX recommends conducting reagent titration tailored to each testing system for optimal detection results.

WB	1:500 - 1:1000
----	----------------

*Results are sample-specific. Please refer to your local assay conditions and test parameters for reference.

PRODUCT OVERVIEW

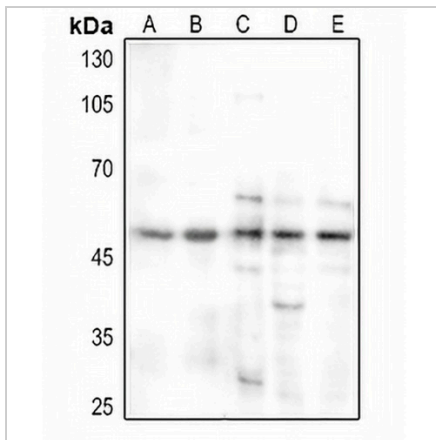
Description	Rabbit polyclonal antibody to IRF1
Specificity	Recognizes endogenous levels of IRF1 protein.
Antibody Type	Primary antibody
Immunogen	KLH-conjugated synthetic peptide encompassing a sequence within the center region of human IRF1. The exact sequence is proprietary.
Purification	The antibody was purified by immunogen affinity chromatography.
Molecular Weight	Predicted: 36 kD; Observed: 48 kD
Form/Buffer	Liquid in 0.42% Potassium phosphate, 0.87% Sodium chloride, pH 7.3, 30% glycerol, and 0.01% sodium azide.
Alternative Names	Interferon regulatory factor 1; IRF-1
Gene Symbol	IRF1
Entrez Gene	3659(Human); 16362(Mouse); 24508(Rat)
SwissProt	P10914(Human); P15314(Mouse); P23570(Rat)

*AREX continuously optimizes our products. Webpage content may not reflect the latest updates. For inquiries, please contact info@arexbio.com or your local distributor.

*Clone Number, Reactivity, Source/Host and Clonality can be found in the product name and Key Features section above.

DATASHEET**IRF1 Rabbit Polyclonal Antibody**

CAT. NO. APA08986

DATA

Western blot analysis of IRF1 expression in HEK293T (A), H1688 (B), mouse testis (C), rat lung (D), rat testis (E) whole cell lysates. (Predicted band size: 36 kD; Observed band size: 48 kD)

STORAGE

Store at 4°C short term. For long term storage, store at -20°C, avoiding freeze/thaw cycles.

NOTE

For Research Use Only. Not for diagnostic, therapeutics, prophylactic or in vivo use.