

DATASHEET

LTBP1 Rabbit Polyclonal Antibody

CAT. NO. APA08997

KEY FEATURES

Target	LTBP1	Source / Host	Rabbit
Reactivity	Human, Mouse, Rat	Clonality	Polyclonal
Applications	WB	Conjugation	Unconjugated
Form / Buffer	Liquid in 0.42% Potassium phosphate, 0.87% Sodium chloride, pH 7.3, 30% glycerol, and 0.01% sodium azide.		Storage at -20°C

BACKGROUND

Key regulator of transforming growth factor beta (TGFB1, TGFB2 and TGFB3) that controls TGF-beta activation by maintaining it in a latent state during storage in extracellular space that controls TGF-beta activation by maintaining it in a latent state during storage in extracellular space . Associates specifically via disulfide bonds with the Latency-associated peptide (LAP), which is the regulatory chain of TGF-beta, and regulates integrin-dependent activation of TGF-beta . Outcompeted by LRRC32/GARP for binding to LAP regulatory chain of TGF-beta .

APPLICATION

To ensure optimal assay performance, AREX recommends conducting reagent titration tailored to each testing system for optimal detection results.

WB	1:500 - 1:1000
----	----------------

*Results are sample-specific. Please refer to your local assay conditions and test parameters for reference.

PRODUCT OVERVIEW

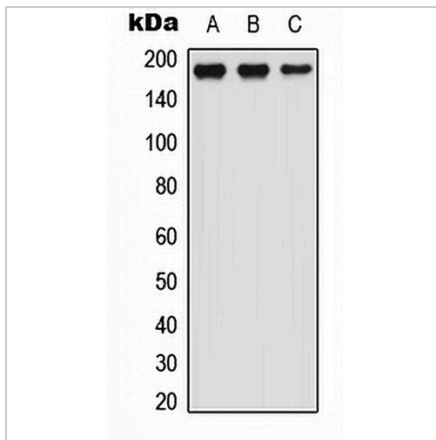
Description	Rabbit polyclonal antibody to LTBP1
Specificity	Recognizes endogenous levels of LTBP1 protein.
Antibody Type	Primary antibody
Immunogen	KLH-conjugated synthetic peptide encompassing a sequence within the N-term region of human LTBP1. The exact sequence is proprietary.
Purification	The antibody was purified by immunogen affinity chromatography.
Molecular Weight	Predicted: 186 kD; Observed: 186 kD
Form/Buffer	Liquid in 0.42% Potassium phosphate, 0.87% Sodium chloride, pH 7.3, 30% glycerol, and 0.01% sodium azide.
Alternative Names	Latent-transforming growth factor beta-binding protein 1; LTBP-1; Transforming growth factor beta-1-binding protein 1; TGF-beta1-BP-1
Gene Symbol	LTBP1
Entrez Gene	4052(Human); 268977(Mouse); 59107(Rat)
SwissProt	Q14766(Human); Q8CG19(Mouse); Q00918(Rat)

*AREX continuously optimizes our products. Webpage content may not reflect the latest updates. For inquiries, please contact info@arexbio.com or your local distributor.

*Clone Number, Reactivity, Source/Host and Clonality can be found in the product name and Key Features section above.

DATASHEET**LTBP1 Rabbit Polyclonal Antibody**

CAT. NO. APA08997

DATA

Western blot analysis of LTBP1 expression in HEK293T (A), Raw264.7 (B), H9C2 (C) whole cell lysates. (Predicted band size: 186 kD; Observed band size: 186 kD)

STORAGE

Store at 4°C short term. For long term storage, store at -20°C, avoiding freeze/thaw cycles.

NOTE

For Research Use Only. Not for diagnostic, therapeutics, prophylactic or in vivo use.