

DATASHEET

Melatonin Receptor 1a Rabbit Polyclonal Antibody

CAT. NO. APA09005

KEY FEATURES

Target	Melatonin Receptor 1a	Source / Host	Rabbit
Reactivity	Human, Mouse, Rat	Clonality	Polyclonal
Applications	WB	Conjugation	Unconjugated
Form / Buffer	Liquid in 0.42% Potassium phosphate, 0.87% Sodium chloride, pH 7.3, 30% glycerol, and 0.01% sodium azide.	Storage	at-20°C

BACKGROUND

High affinity receptor for melatonin. Likely to mediate the reproductive and circadian actions of melatonin. The activity of this receptor is mediated by pertussis toxin sensitive G proteins that inhibit adenylate cyclase activity. Possibly involved in sleep induction, by melatonin activation of the potassium channel KCNMA1/BK and the dissociation of G-beta and G-gamma subunits, thereby decreasing synaptic transmission .

APPLICATION

To ensure optimal assay performance, AREX recommends conducting reagent titration tailored to each testing system for optimal detection results.

WB	1:500 - 1:1000
----	----------------

*Results are sample-specific. Please refer to your local assay conditions and test parameters for reference.

PRODUCT OVERVIEW

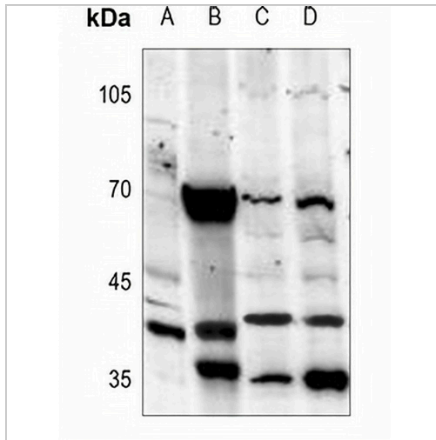
Description	Rabbit polyclonal antibody to Melatonin Receptor 1a
Specificity	Recognizes endogenous levels of Melatonin Receptor 1a protein.
Antibody Type	Primary antibody
Immunogen	KLH-conjugated synthetic peptide encompassing a sequence within the center region of human Melatonin Receptor 1a. The exact sequence is proprietary.
Purification	The antibody was purified by immunogen affinity chromatography.
Molecular Weight	Predicted: 39 kD; Observed: 39 kD
Form/Buffer	Liquid in 0.42% Potassium phosphate, 0.87% Sodium chloride, pH 7.3, 30% glycerol, and 0.01% sodium azide.
Alternative Names	Melatonin receptor type 1A; Mel-1A-R; Mel1a receptor
Gene Symbol	MTNR1A
Entrez Gene	4543(Human); 17773(Mouse)
SwissProt	P48039(Human); Q61184(Mouse); P49218(Rat)

*AREX continuously optimizes our products. Webpage content may not reflect the latest updates. For inquiries, please contact info@arexbio.com or your local distributor.

*Clone Number, Reactivity, Source/Host and Clonality can be found in the product name and Key Features section above.

DATASHEET**Melatonin Receptor 1a Rabbit Polyclonal Antibody**

CAT. NO. APA09005

DATA

Western blot analysis of Melatonin Receptor 1a expression in mouse brain (A), rat kidney (B), HEK293T (C), HCT116 (D) whole cell lysates. (Predicted band size: 39 kD; Observed band size: 39 kD)

STORAGE

Store at 4°C short term. For long term storage, store at -20°C, avoiding freeze/thaw cycles.

NOTE

For Research Use Only. Not for diagnostic, therapeutics, prophylactic or in vivo use.