

DATASHEET

MRP Rabbit Polyclonal Antibody

CAT. NO. APA09015

KEY FEATURES

Target	MRP	Source / Host	Rabbit
Reactivity	Human, Mouse, Rat, Bovine, Rabbit	Clonality	Polyclonal
Applications	WB	Conjugation	Unconjugated
Form / Buffer	Liquid in 0.42% Potassium phosphate, 0.87% Sodium chloride, pH 7.3, 30% glycerol, and 0.01% sodium azide.		Storage at-20°C

BACKGROUND

Controls cell movement by regulating actin cytoskeleton homeostasis and filopodium and lamellipodium formation . When unphosphorylated, induces cell migration . When phosphorylated by MAPK8, induces actin bundles formation and stabilization, thereby reducing actin plasticity, hence restricting cell movement, including neuronal migration . May be involved in coupling the protein kinase C and calmodulin signal transduction systems .

APPLICATION

To ensure optimal assay performance, AREX recommends conducting reagent titration tailored to each testing system for optimal detection results.

WB	1:500 - 1:1000
----	----------------

*Results are sample-specific. Please refer to your local assay conditions and test parameters for reference.

PRODUCT OVERVIEW

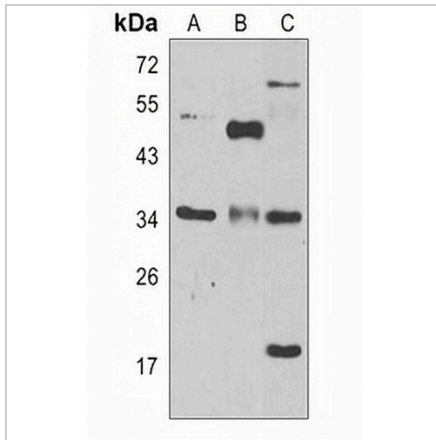
Description	Rabbit polyclonal antibody to MRP
Specificity	Recognizes endogenous levels of MRP protein.
Antibody Type	Primary antibody
Immunogen	KLH-conjugated synthetic peptide encompassing a sequence within the N-term region of human MRP. The exact sequence is proprietary.
Purification	The antibody was purified by immunogen affinity chromatography.
Molecular Weight	Predicted: 19 kD; Observed: 35 kD
Form/Buffer	Liquid in 0.42% Potassium phosphate, 0.87% Sodium chloride, pH 7.3, 30% glycerol, and 0.01% sodium azide.
Alternative Names	MLP; MRP; MARCKS-related protein; MARCKS-like protein 1; Macrophage myristoylated alanine-rich C kinase substrate; Mac-MARCKS; MacMARCKS
Gene Symbol	MARCKSL1
Entrez Gene	65108(Human); 17357(Mouse); 100911122; 100911158; 81520(Rat)
SwissProt	P49006(Human); P28667(Mouse); Q9EPH2(Rat)

*AREX continuously optimizes our products. Webpage content may not reflect the latest updates. For inquiries, please contact info@arexbio.com or your local distributor.

*Clone Number, Reactivity, Source/Host and Clonality can be found in the product name and Key Features section above.

DATASHEET**MRP Rabbit Polyclonal Antibody**

CAT. NO. APA09015

DATA

Western blot analysis of MRP expression in 22RV1 (A), H460 (B), mouse spleen (C) whole cell lysates. (Predicted band size: 19 kD; Observed band size: 35 kD)

STORAGE

Store at 4°C short term. For long term storage, store at -20°C, avoiding freeze/thaw cycles.

NOTE

For Research Use Only. Not for diagnostic, therapeutics, prophylactic or in vivo use.