

DATASHEET

NEIL2 Rabbit Polyclonal Antibody

CAT. NO. APA09021

KEY FEATURES

Target	NEIL2	Source / Host	Rabbit
Reactivity	Human, Rat, Bovine, Monkey	Clonality	Polyclonal
Applications	WB	Conjugation	Unconjugated
Form / Buffer	Liquid in 0.42% Potassium phosphate, 0.87% Sodium chloride, pH 7.3, 30% glycerol, and 0.01% sodium azide.		Storage at -20°C

BACKGROUND

Involved in base excision repair of DNA damaged by oxidation or by mutagenic agents. Has DNA glycosylase activity towards 5-hydroxyuracil and other oxidized derivatives of cytosine with a preference for mismatched double-stranded DNA (DNA bubbles). Has low or no DNA glycosylase activity towards thymine glycol, 2-hydroxyadenine, hypoxanthine and 8-oxoguanine. Has AP (apurinic/aprimidinic) lyase activity and introduces nicks in the DNA strand. Cleaves the DNA backbone by beta-delta elimination to generate a single-strand break at the site of the removed base with both 3'- and 5'-phosphates.

APPLICATION

To ensure optimal assay performance, AREX recommends conducting reagent titration tailored to each testing system for optimal detection results.

WB	1:500 - 1:1000
----	----------------

*Results are sample-specific. Please refer to your local assay conditions and test parameters for reference.

PRODUCT OVERVIEW

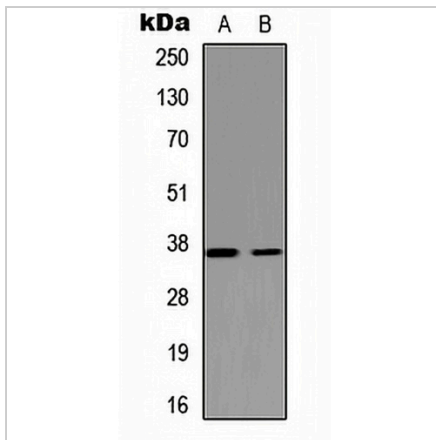
Description	Rabbit polyclonal antibody to NEIL2
Specificity	Recognizes endogenous levels of NEIL2 protein.
Antibody Type	Primary antibody
Immunogen	KLH-conjugated synthetic peptide encompassing a sequence within the center region of human NEIL2. The exact sequence is proprietary.
Purification	The antibody was purified by immunogen affinity chromatography.
Molecular Weight	Predicted: 36 kD; Observed: 37 kD
Form/Buffer	Liquid in 0.42% Potassium phosphate, 0.87% Sodium chloride, pH 7.3, 30% glycerol, and 0.01% sodium azide.
Alternative Names	Endonuclease 8-like 2; DNA glycosylase/AP lyase Neil2; DNA-(apurinic or apyrimidinic site) lyase Neil2; Endonuclease VIII-like 2; Nei homolog 2; NEH2; Nei-like protein 2
Gene Symbol	NEIL2
Entrez Gene	252969(Human); 382913(Mouse)
SwissProt	Q969S2(Human); Q6R2P8(Mouse)

*AREX continuously optimizes our products. Webpage content may not reflect the latest updates. For inquiries, please contact info@arexbio.com or your local distributor.

*Clone Number, Reactivity, Source/Host and Clonality can be found in the product name and Key Features section above.

DATASHEET**NEIL2 Rabbit Polyclonal Antibody**

CAT. NO. APA09021

DATA

Western blot analysis of NEIL2 expression in HEK293T (A), PC12 (B) whole cell lysates. (Predicted band size: 36 kD; Observed band size: 37 kD)

STORAGE

Store at 4°C short term. For long term storage, store at -20°C, avoiding freeze/thaw cycles.

NOTE

For Research Use Only. Not for diagnostic, therapeutics, prophylactic or in vivo use.