

DATASHEET

Nocturnin Rabbit Polyclonal Antibody

CAT. NO. APA09026

KEY FEATURES

Target	Nocturnin	Source / Host	Rabbit
Reactivity	Human, Mouse, Rat, Bovine, Chicken	Clonality	Polyclonal
Applications	WB	Conjugation	Unconjugated
Form / Buffer	Liquid in 0.42% Potassium phosphate, 0.87% Sodium chloride, pH 7.3, 30% glycerol, and 0.01% sodium azide.		Storage at -20°C

BACKGROUND

Phosphatase which catalyzes the conversion of NADP(+) to NAD(+) and of NADPH to NADH to NAD(+) and of NADPH to NADH . Shows a small preference for NADPH over NADP(+) . Represses translation and promotes degradation of target mRNA molecules . Plays an important role in post-transcriptional regulation of metabolic genes under circadian control . Exerts a rhythmic post-transcriptional control of genes necessary for metabolic functions including nutrient absorption, glucose/insulin sensitivity, lipid metabolism, adipogenesis, inflammation and osteogenesis . Plays an important role in favoring adipogenesis over osteoblastogenesis and acts as a key regulator of the adipogenesis/osteogenesis balance .

APPLICATION

To ensure optimal assay performance, AREX recommends conducting reagent titration tailored to each testing system for optimal detection results.

WB	1:500 - 1:1000
----	----------------

*Results are sample-specific. Please refer to your local assay conditions and test parameters for reference.

PRODUCT OVERVIEW

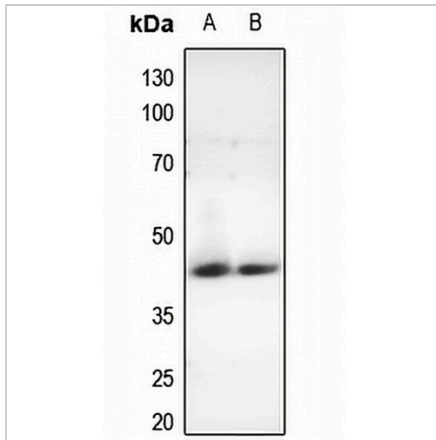
Description	Rabbit polyclonal antibody to Nocturnin
Specificity	Recognizes endogenous levels of Nocturnin protein.
Antibody Type	Primary antibody
Immunogen	KLH-conjugated synthetic peptide encompassing a sequence within the center region of human Nocturnin. The exact sequence is proprietary.
Purification	The antibody was purified by immunogen affinity chromatography.
Molecular Weight	Predicted: 48 kD; Observed: 42 kD
Form/Buffer	Liquid in 0.42% Potassium phosphate, 0.87% Sodium chloride, pH 7.3, 30% glycerol, and 0.01% sodium azide.
Alternative Names	CCR4; NOC; Nocturnin; Carbon catabolite repression 4-like protein; Circadian deadenylase NOC
Gene Symbol	CCRN4L
Entrez Gene	25819(Human); 12457(Mouse); 310395(Rat)
SwissProt	Q9UK39(Human); O35710(Mouse); Q9ET55(Rat)

*AREX continuously optimizes our products. Webpage content may not reflect the latest updates. For inquiries, please contact info@arexbio.com or your local distributor.

*Clone Number, Reactivity, Source/Host and Clonality can be found in the product name and Key Features section above.

DATASHEET**Nocturnin Rabbit Polyclonal Antibody**

CAT. NO. APA09026

DATA

Western blot analysis of Nocturnin expression in mouse muscle (A), rat muscle (B) whole cell lysates. (Predicted band size: 48 kD; Observed band size: 42 kD)

STORAGE

Store at 4°C short term. For long term storage, store at -20°C, avoiding freeze/thaw cycles.

NOTE

For Research Use Only. Not for diagnostic, therapeutics, prophylactic or in vivo use.