

DATASHEET

NOTCH3 Rabbit Polyclonal Antibody

CAT. NO. APA09028

KEY FEATURES

Target	NOTCH3	Source / Host	Rabbit
Reactivity	Human, Mouse	Clonality	Polyclonal
Applications	WB	Conjugation	Unconjugated
Form / Buffer	Liquid in 0.42% Potassium phosphate, 0.87% Sodium chloride, pH 7.3, 30% glycerol, and 0.01% sodium azide.		Storage at-20°C

BACKGROUND

Functions as a receptor for membrane-bound ligands Jagged1, Jagged2 and Delta1 to regulate cell-fate determination . Upon ligand activation through the released notch intracellular domain (NICD), it forms a transcriptional activator complex with RBPJ/RBPSUH and activates genes of the enhancer of split locus. Affects the implementation of differentiation, proliferation and apoptotic programs .

APPLICATION

To ensure optimal assay performance, AREX recommends conducting reagent titration tailored to each testing system for optimal detection results.

WB	1:500 - 1:1000
----	----------------

*Results are sample-specific. Please refer to your local assay conditions and test parameters for reference.

PRODUCT OVERVIEW

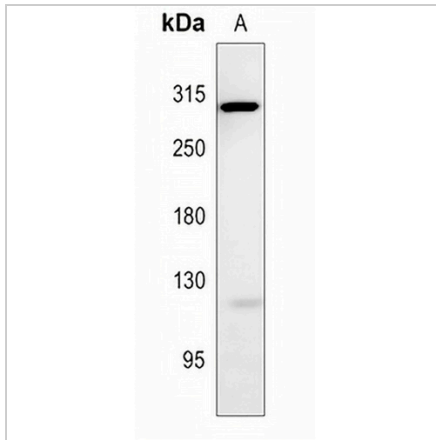
Description	Rabbit polyclonal antibody to NOTCH3
Specificity	Recognizes endogenous levels of NOTCH3 protein.
Antibody Type	Primary antibody
Immunogen	KLH-conjugated synthetic peptide encompassing a sequence within the C-term region of human NOTCH3. The exact sequence is proprietary.
Purification	The antibody was purified by immunogen affinity chromatography.
Molecular Weight	Predicted: 243 kD; Observed: 280 kD
Form/Buffer	Liquid in 0.42% Potassium phosphate, 0.87% Sodium chloride, pH 7.3, 30% glycerol, and 0.01% sodium azide.
Alternative Names	Neurogenic locus notch homolog protein 3; Notch 3
Gene Symbol	NOTCH3
Entrez Gene	4854(Human); 18131(Mouse)
SwissProt	Q9UM47(Human); Q61982(Mouse)

*AREX continuously optimizes our products. Webpage content may not reflect the latest updates. For inquiries, please contact info@arexbio.com or your local distributor.

*Clone Number, Reactivity, Source/Host and Clonality can be found in the product name and Key Features section above.

DATASHEET**NOTCH3 Rabbit Polyclonal Antibody**

CAT. NO. APA09028

DATA

Western blot analysis of NOTCH3 expression in NIH3T3 (A) whole cell lysates. (Predicted band size: 243 kD; Observed band size: 280 kD)

STORAGE

Store at 4°C short term. For long term storage, store at -20°C, avoiding freeze/thaw cycles.

NOTE

For Research Use Only. Not for diagnostic, therapeutics, prophylactic or in vivo use.