

DATASHEET

NUP210L Rabbit Polyclonal Antibody

CAT. NO. APA09030

KEY FEATURES

Target	NUP210L	Source / Host	Rabbit
Reactivity	Human, Rat	Clonality	Polyclonal
Applications	WB	Conjugation	Unconjugated
Form / Buffer	Liquid in 0.42% Potassium phosphate, 0.87% Sodium chloride, pH 7.3, 30% glycerol, and 0.01% sodium azide.		Storage at -20°C

BACKGROUND

Nuclear pore membrane glycoprotein 210-like (NUP210L), also known as Nucleoporin 210 kDa-like, Nucleoporin Nup210-like. Belongs to the NUP210 family Subcellular location: Nucleus membrane

APPLICATION

To ensure optimal assay performance, AREX recommends conducting reagent titration tailored to each testing system for optimal detection results.

WB	1:500 - 1:1000
----	----------------

*Results are sample-specific. Please refer to your local assay conditions and test parameters for reference.

PRODUCT OVERVIEW

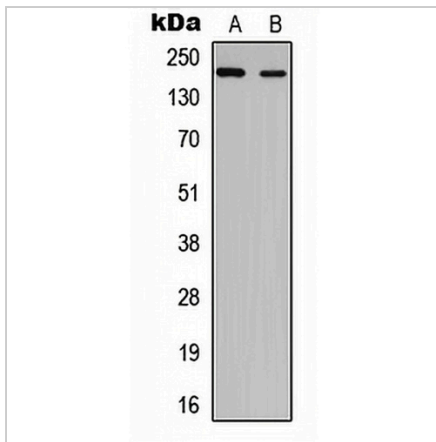
Description	Rabbit polyclonal antibody to NUP210L
Specificity	Recognizes endogenous levels of NUP210L protein.
Antibody Type	Primary antibody
Immunogen	KLH-conjugated synthetic peptide encompassing a sequence within the center region of human NUP210L. The exact sequence is proprietary.
Purification	The antibody was purified by immunogen affinity chromatography.
Molecular Weight	Predicted: 210 kD; Observed: 210 kD
Form/Buffer	Liquid in 0.42% Potassium phosphate, 0.87% Sodium chloride, pH 7.3, 30% glycerol, and 0.01% sodium azide.
Alternative Names	Nuclear pore membrane glycoprotein 210-like; Nucleoporin 210 kDa-like; Nucleoporin Nup210-like
Gene Symbol	NUP210L
Entrez Gene	91181(Human); 77595(Mouse)
SwissProt	Q5VU65(Human); Q9D2F7(Mouse)

*AREX continuously optimizes our products. Webpage content may not reflect the latest updates. For inquiries, please contact info@arexbio.com or your local distributor.

*Clone Number, Reactivity, Source/Host and Clonality can be found in the product name and Key Features section above.

DATASHEET**NUP210L Rabbit Polyclonal Antibody**

CAT. NO. APA09030

DATA

Western blot analysis of NUP210L expression in HEK293T (A), PC12 (B) whole cell lysates. (Predicted band size: 210 kD; Observed band size: 210 kD)

STORAGE

Store at 4°C short term. For long term storage, store at -20°C, avoiding freeze/thaw cycles.

NOTE

For Research Use Only. Not for diagnostic, therapeutics, prophylactic or in vivo use.