

**DATASHEET**

**OCTN1 Rabbit Polyclonal Antibody**

CAT. NO. APA09032

**KEY FEATURES**

Target	OCTN1	Source / Host	Rabbit
Reactivity	Human, Mouse, Rat	Clonality	Polyclonal
Applications	WB, IF/ICC	Conjugation	Unconjugated
Form / Buffer	Liquid in 0.42% Potassium phosphate, 0.87% Sodium chloride, pH 7.3, 30% glycerol, and 0.01% sodium azide.		Storage at-20°C

**BACKGROUND**

Transporter that mediates the transport of endogenous and microbial zwitterions and organic cations . Functions as a Na(+)-dependent and pH-dependent high affinity microbial symporter of potent food-derived antioxidant ergothioneine . Transports one sodium ion with one ergothioneine molecule . Involved in the absorption of ergothioneine from the luminal/apical side of the small intestine and renal tubular cells, and into non-parenchymal liver cells, thereby contributing to maintain steady-state ergothioneine level in the body . Also mediates the bidirectional transport of acetylcholine, although the exact transport mechanism has not been fully identified yet .

**APPLICATION**

To ensure optimal assay performance, AREX recommends conducting reagent titration tailored to each testing system for optimal detection results.

WB	1:500 - 1:1000
IF/ICC	1:50 - 1:200

\*Results are sample-specific. Please refer to your local assay conditions and test parameters for reference.

**PRODUCT OVERVIEW**

Description	Rabbit polyclonal antibody to OCTN1
Specificity	Recognizes endogenous levels of OCTN1 protein.
Antibody Type	Primary antibody
Immunogen	KLH-conjugated synthetic peptide encompassing a sequence within the center region of human OCTN1. The exact sequence is proprietary.
Purification	The antibody was purified by immunogen affinity chromatography.
Molecular Weight	Predicted: 62 kD; Observed: 62 kD
Form/Buffer	Liquid in 0.42% Potassium phosphate, 0.87% Sodium chloride, pH 7.3, 30% glycerol, and 0.01% sodium azide.
Alternative Names	ETT; OCTN1; UT2H; Solute carrier family 22 member 4; Ergothioneine transporter; ET transporter; Organic cation/carnitine transporter 1
Gene Symbol	SLC22A4
Entrez Gene	6583(Human); 30805(Mouse); 64037(Rat)
SwissProt	Q9H015(Human); Q9Z306(Mouse); Q9R141(Rat)

\*AREX continuously optimizes our products. Webpage content may not reflect the latest updates. For inquiries, please contact [info@arexbio.com](mailto:info@arexbio.com) or your local distributor.

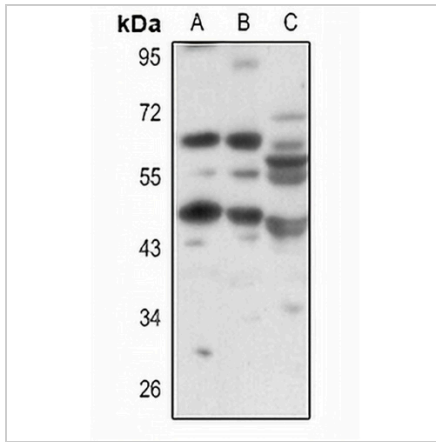
\*Clone Number, Reactivity, Source/Host and Clonality can be found in the product name and Key Features section above.

**DATASHEET**

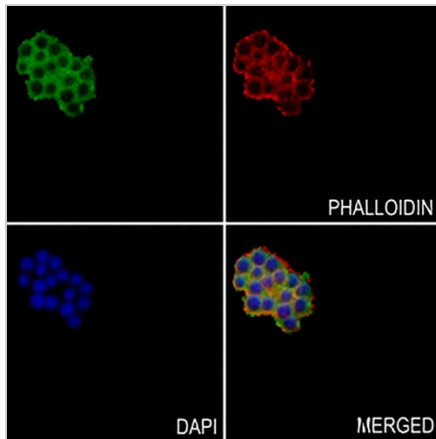
**OCTN1 Rabbit Polyclonal Antibody**

CAT. NO. APA09032

**DATA**



Western blot analysis of OCTN1 expression in HEK293T (A), HeLa (B), mouse lung (C) whole cell lysates. (Predicted band size: 62 kD; Observed band size: 62 kD)



Immunofluorescent analysis of OCTN1 staining in MDAMB231 cells. Formalin-fixed cells were permeabilized with 0.1% Triton X-100 in TBS for 5-10 minutes and blocked with 3% BSA-PBS for 30 minutes at room temperature. Cells were probed with the primary antibody in 3% BSA-PBS and incubated overnight at 4 °C in a humidified chamber. Cells were washed with PBST and incubated with a AREX® Fluor 488 -conjugated secondary antibody (green) in PBS at room temperature in the dark. Phalloidin - AREX® Fluor 594 was used to stain Actin filaments (red). DAPI was used to stain the cell nuclei (blue).

**STORAGE**

Store at 4°C short term. For long term storage, store at -20°C, avoiding freeze/thaw cycles.

**NOTE**

For Research Use Only. Not for diagnostic, therapeutics, prophylactic or in vivo use.