

DATASHEET

PDP1 Rabbit Polyclonal Antibody

CAT. NO. APA09038

KEY FEATURES

Target	PDP1	Source / Host	Rabbit
Reactivity	Human, Mouse, Bovine	Clonality	Polyclonal
Applications	WB, IF/ICC	Conjugation	Unconjugated
Form / Buffer	Liquid in 0.42% Potassium phosphate, 0.87% Sodium chloride, pH 7.3, 30% glycerol, and 0.01% sodium azide.		Storage at -20°C

BACKGROUND

Mitochondrial enzyme that catalyzes the dephosphorylation and concomitant reactivation of the alpha subunit of the E1 component of the pyruvate dehydrogenase complex (PDC), thereby stimulating the conversion of pyruvate into acetyl-CoA.

APPLICATION

To ensure optimal assay performance, AREX recommends conducting reagent titration tailored to each testing system for optimal detection results.

WB	1:500 - 1:1000
IF/ICC	1:50 - 1:200

*Results are sample-specific. Please refer to your local assay conditions and test parameters for reference.

PRODUCT OVERVIEW

Description	Rabbit polyclonal antibody to PDP1
Specificity	Recognizes endogenous levels of PDP1 protein.
Antibody Type	Primary antibody
Immunogen	KLH-conjugated synthetic peptide encompassing a sequence within the center region of human PDP1. The exact sequence is proprietary.
Purification	The antibody was purified by immunogen affinity chromatography.
Molecular Weight	Predicted: 61; Observed: 61; 63 kD
Form/Buffer	Liquid in 0.42% Potassium phosphate, 0.87% Sodium chloride, pH 7.3, 30% glycerol, and 0.01% sodium azide.
Alternative Names	PDP; PPM2C; [Pyruvate dehydrogenase [acetyl-transferring]]-phosphatase 1 mitochondrial; PDP 1; Protein phosphatase 2C; Pyruvate dehydrogenase phosphatase catalytic subunit 1; PDPC 1
Gene Symbol	PDP1
Entrez Gene	54704(Human); 381511(Mouse)
SwissProt	Q9P0J1(Human); Q3UV70(Mouse)

*AREX continuously optimizes our products. Webpage content may not reflect the latest updates. For inquiries, please contact info@arexbio.com or your local distributor.

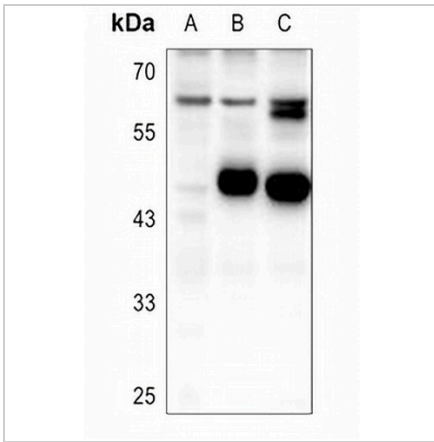
*Clone Number, Reactivity, Source/Host and Clonality can be found in the product name and Key Features section above.

DATASHEET

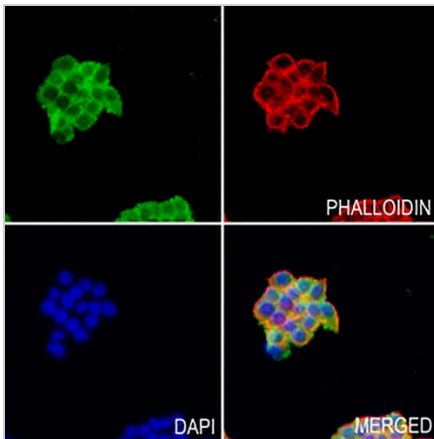
PDP1 Rabbit Polyclonal Antibody

CAT. NO. APA09038

DATA



Western blot analysis of PDP1 expression in A549 (A), rat lung (B), mouse lung (C) whole cell lysates. (Predicted band size: 61; 63 kD; Observed band size: 61; 63 kD)



Immunofluorescent analysis of PDP1 staining in MDAMB231 cells. Formalin-fixed cells were permeabilized with 0.1% Triton X-100 in TBS for 5-10 minutes and blocked with 3% BSA-PBS for 30 minutes at room temperature. Cells were probed with the primary antibody in 3% BSA-PBS and incubated overnight at 4 °C in a humidified chamber. Cells were washed with PBST and incubated with a AREX® Fluor 488 -conjugated secondary antibody (green) in PBS at room temperature in the dark. Phalloidin - AREX® Fluor 594 was used to stain Actin filaments (red). DAPI was used to stain the cell nuclei (blue).

STORAGE

Store at 4°C short term. For long term storage, store at -20°C, avoiding freeze/thaw cycles.

NOTE

For Research Use Only. Not for diagnostic, therapeutics, prophylactic or in vivo use.