

DATASHEET

Pokemon Rabbit Polyclonal Antibody

CAT. NO. APA09041

KEY FEATURES

Target	Pokemon	Source / Host	Rabbit
Reactivity	Human, Mouse, Rat	Clonality	Polyclonal
Applications	WB, IF/ICC	Conjugation	Unconjugated
Form / Buffer	Liquid in 0.42% Potassium phosphate, 0.87% Sodium chloride, pH 7.3, 30% glycerol, and 0.01% sodium azide.		Storage at-20°C

BACKGROUND

Transcription factor that represses the transcription of a wide range of genes involved in cell proliferation and differentiation . Directly and specifically binds to the consensus sequence 5'-[GA][CA]GACCCCCCCC-3' and represses transcription both by regulating the organization of chromatin and through the direct recruitment of transcription factors to gene regulatory regions . Negatively regulates SMAD4 transcriptional activity in the TGF-beta signaling pathway through these two mechanisms . That is, recruits the chromatin regulator HDAC1 to the SMAD4-DNA complex and in parallel prevents the recruitment of the transcriptional activators CREBBP and EP300 .

APPLICATION

To ensure optimal assay performance, AREX recommends conducting reagent titration tailored to each testing system for optimal detection results.

WB	1:500 - 1:1000
IF/ICC	1:50 - 1:200

*Results are sample-specific. Please refer to your local assay conditions and test parameters for reference.

PRODUCT OVERVIEW

Description	Rabbit polyclonal antibody to Pokemon
Specificity	Recognizes endogenous levels of Pokemon protein.
Antibody Type	Primary antibody
Immunogen	KLH-conjugated synthetic peptide encompassing a sequence within the center region of human Pokemon. The exact sequence is proprietary.
Purification	The antibody was purified by immunogen affinity chromatography.
Molecular Weight	Predicted: 61 kD; Observed: 61 kD
Form/Buffer	Liquid in 0.42% Potassium phosphate, 0.87% Sodium chloride, pH 7.3, 30% glycerol, and 0.01% sodium azide.
Alternative Names	FBI1; LRF; ZBTB7; ZNF857A; Zinc finger and BTB domain-containing protein 7A; Factor binding IST protein 1; FBI-1; Factor that binds to inducer of short transcripts protein 1; HIV-1 1st-binding protein 1; Leukemia/lymphoma-related factor; POZ and Krueppel erythroid myeloid ontogenic factor; POK erythroid myeloid ontogenic factor; Pokemon; TTF-I-interacting peptide 21; TIP21; Zinc finger protein 857A
Gene Symbol	ZBTB7A
Entrez Gene	51341(Human); 16969(Mouse); 117107(Rat)
SwissProt	O95365(Human); O88939(Mouse); Q9QZ48(Rat)

*AREX continuously optimizes our products. Webpage content may not reflect the latest updates. For inquiries, please contact info@arexbio.com or your local distributor.

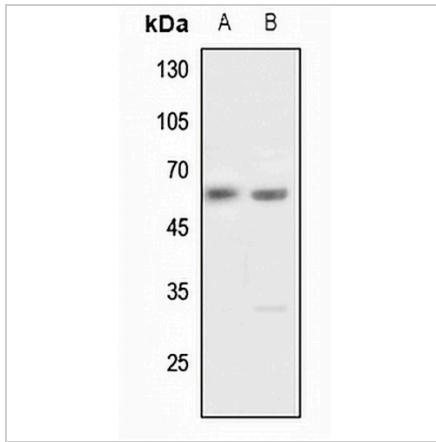
*Clone Number, Reactivity, Source/Host and Clonality can be found in the product name and Key Features section above.

DATASHEET

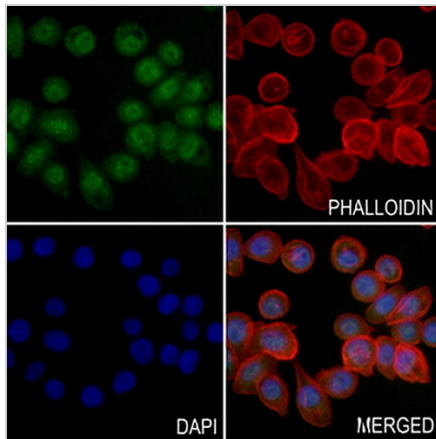
Pokemon Rabbit Polyclonal Antibody

CAT. NO. APA09041

DATA



Western blot analysis of Pokemon expression in HeLa (A), HGC27 (B) whole cell lysates. (Predicted band size: 61 kD; Observed band size: 61 kD)



Immunofluorescent analysis of Pokemon staining in PC9 cells. Formalin-fixed cells were permeabilized with 0.1% Triton X-100 in TBS for 5-10 minutes and blocked with 3% BSA-PBS for 30 minutes at room temperature. Cells were probed with the primary antibody in 3% BSA-PBS and incubated overnight at 4 °C in a humidified chamber. Cells were washed with PBST and incubated with a AREX® Fluor 488 -conjugated secondary antibody (green) in PBS at room temperature in the dark. Phalloidin - AREX® Fluor 594 was used to stain Actin filaments (red). DAPI was used to stain the cell nuclei (blue).

STORAGE

Store at 4°C short term. For long term storage, store at -20°C, avoiding freeze/thaw cycles.

NOTE

For Research Use Only. Not for diagnostic, therapeutics, prophylactic or in vivo use.