

## DATASHEET

# RhoXF1 Rabbit Polyclonal Antibody

CAT. NO. APA09053

### KEY FEATURES

Target	RhoXF1	Source / Host	Rabbit
Reactivity	Human	Clonality	Polyclonal
Applications	WB	Conjugation	Unconjugated
Form / Buffer	Liquid in 0.42% Potassium phosphate, 0.87% Sodium chloride, pH 7.3, 30% glycerol, and 0.01% sodium azide.		Storage at -20°C

### BACKGROUND

Transcription factor maybe involved in reproductive processes. Modulates expression of target genes encoding proteins involved in processes relevant to spermatogenesis.

### APPLICATION

To ensure optimal assay performance, AREX recommends conducting reagent titration tailored to each testing system for optimal detection results.

WB	1:500 - 1:1000
----	----------------

\*Results are sample-specific. Please refer to your local assay conditions and test parameters for reference.

### PRODUCT OVERVIEW

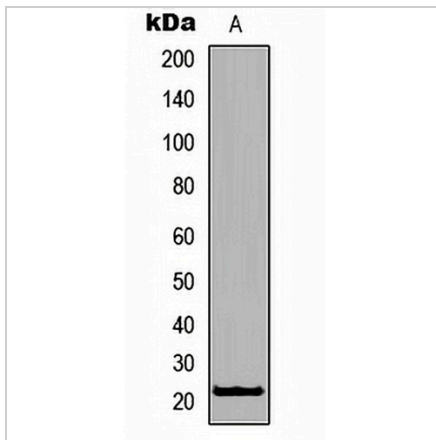
Description	Rabbit polyclonal antibody to RhoXF1
Specificity	Recognizes endogenous levels of RhoXF1 protein.
Antibody Type	Primary antibody
Immunogen	KLH-conjugated synthetic peptide encompassing a sequence within the C-term region of human RhoXF1. The exact sequence is proprietary.
Purification	The antibody was purified by immunogen affinity chromatography.
Molecular Weight	Predicted: 20 kD; Observed: 23 kD
Form/Buffer	Liquid in 0.42% Potassium phosphate, 0.87% Sodium chloride, pH 7.3, 30% glycerol, and 0.01% sodium azide.
Alternative Names	OTEX; PEPP1; RhoX homeobox family member 1; Ovary-, testis- and epididymis-expressed gene protein; Paired-like homeobox protein PEPP-1
Gene Symbol	RHOXF1
Entrez Gene	158800(Human)
SwissProt	Q8NHV9(Human)

\*AREX continuously optimizes our products. Webpage content may not reflect the latest updates. For inquiries, please contact [info@arexbio.com](mailto:info@arexbio.com) or your local distributor.

\*Clone Number, Reactivity, Source/Host and Clonality can be found in the product name and Key Features section above.

**DATASHEET****RhoXF1 Rabbit Polyclonal Antibody**

CAT. NO. APA09053

**DATA**

Western blot analysis of RhoXF1 expression in Jurkat (A) whole cell lysates. (Predicted band size: 20 kD; Observed band size: 23 kD)

**STORAGE**

Store at 4°C short term. For long term storage, store at -20°C, avoiding freeze/thaw cycles.

**NOTE**

For Research Use Only. Not for diagnostic, therapeutics, prophylactic or in vivo use.