

DATASHEET

STAC3 Rabbit Polyclonal Antibody

CAT. NO. APA09066

KEY FEATURES

Target	STAC3	Source / Host	Rabbit
Reactivity	Human, Mouse, Rat, Monkey	Clonality	Polyclonal
Applications	WB	Conjugation	Unconjugated
Form / Buffer	Liquid in 0.42% Potassium phosphate, 0.87% Sodium chloride, pH 7.3, 30% glycerol, and 0.01% sodium azide.		Storage at -20°C

BACKGROUND

Required for normal excitation-contraction coupling in skeletal muscle and for normal muscle contraction in response to membrane depolarization. Required for normal Ca(2+) release from the sarcoplasmic reticulum, which ultimately leads to muscle contraction. Probably functions via its effects on muscle calcium channels release from the sarcoplasmic reticulum, which ultimately leads to muscle contraction. Probably functions via its effects on muscle calcium channels . Increases CACNA1S channel activity, in addition to its role in enhancing the expression of CACNA1S at the cell membrane. Has a redundant role in promoting the expression of the calcium channel CACNA1S at the cell membrane . Slows down the inactivation rate of the calcium channel CACNA1C .

APPLICATION

To ensure optimal assay performance, AREX recommends conducting reagent titration tailored to each testing system for optimal detection results.

WB	1:500 - 1:1000
----	----------------

*Results are sample-specific. Please refer to your local assay conditions and test parameters for reference.

PRODUCT OVERVIEW

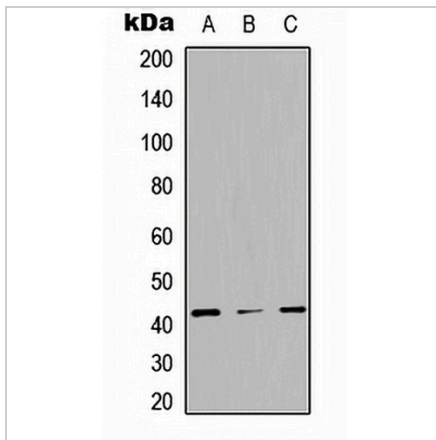
Description	Rabbit polyclonal antibody to STAC3
Specificity	Recognizes endogenous levels of STAC3 protein.
Antibody Type	Primary antibody
Immunogen	KLH-conjugated synthetic peptide encompassing a sequence within the center region of human STAC3. The exact sequence is proprietary.
Purification	The antibody was purified by immunogen affinity chromatography.
Molecular Weight	Predicted: 41 kD; Observed: 41 kD
Form/Buffer	Liquid in 0.42% Potassium phosphate, 0.87% Sodium chloride, pH 7.3, 30% glycerol, and 0.01% sodium azide.
Alternative Names	SH3 and cysteine-rich domain-containing protein 3
Gene Symbol	STAC3
Entrez Gene	246329(Human); 237611(Mouse)
SwissProt	Q96MF2(Human); Q8BZ71(Mouse)

*AREX continuously optimizes our products. Webpage content may not reflect the latest updates. For inquiries, please contact info@arexbio.com or your local distributor.

*Clone Number, Reactivity, Source/Host and Clonality can be found in the product name and Key Features section above.

DATASHEET**STAC3 Rabbit Polyclonal Antibody**

CAT. NO. APA09066

DATA

Western blot analysis of STAC3 expression in HEK293T (A), NS-1 (B), PC12 (C) whole cell lysates. (Predicted band size: 41 kD; Observed band size: 41 kD)

STORAGE

Store at 4°C short term. For long term storage, store at -20°C, avoiding freeze/thaw cycles.

NOTE

For Research Use Only. Not for diagnostic, therapeutics, prophylactic or in vivo use.