

**DATASHEET**

**TGIF2LY Rabbit Polyclonal Antibody**

CAT. NO. APA09071

**KEY FEATURES**

Target	TGIF2LY	Source / Host	Rabbit
Reactivity	Human, Rat	Clonality	Polyclonal
Applications	WB	Conjugation	Unconjugated
Form / Buffer	Liquid in 0.42% Potassium phosphate, 0.87% Sodium chloride, pH 7.3, 30% glycerol, and 0.01% sodium azide.		Storage at -20°C

**BACKGROUND**

May have a transcription role in testis. May act as a competitor/regulator of TGIF2LX.

**APPLICATION**

To ensure optimal assay performance, AREX recommends conducting reagent titration tailored to each testing system for optimal detection results.

WB	1:500 - 1:1000
----	----------------

\*Results are sample-specific. Please refer to your local assay conditions and test parameters for reference.

**PRODUCT OVERVIEW**

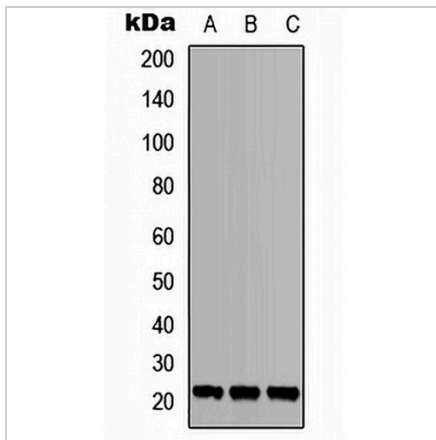
Description	Rabbit polyclonal antibody to TGIF2LY
Specificity	Recognizes endogenous levels of TGIF2LY protein.
Antibody Type	Primary antibody
Immunogen	KLH-conjugated synthetic peptide encompassing a sequence within the C-term region of human TGIF2LY. The exact sequence is proprietary.
Purification	The antibody was purified by immunogen affinity chromatography.
Molecular Weight	Predicted: 20 kD; Observed: 23 kD
Form/Buffer	Liquid in 0.42% Potassium phosphate, 0.87% Sodium chloride, pH 7.3, 30% glycerol, and 0.01% sodium azide.
Alternative Names	TGIFLY; Homeobox protein TGIF2LY; TGF-beta-induced transcription factor 2-like protein; TGFB-induced factor 2-like protein, Y-linked; TGIF-like on the Y
Gene Symbol	TGIF2LY
Entrez Gene	90655(Human)
SwissProt	Q8IUE0(Human)

\*AREX continuously optimizes our products. Webpage content may not reflect the latest updates. For inquiries, please contact [info@arexbio.com](mailto:info@arexbio.com) or your local distributor.

\*Clone Number, Reactivity, Source/Host and Clonality can be found in the product name and Key Features section above.

**DATASHEET****TGIF2LY Rabbit Polyclonal Antibody**

CAT. NO. APA09071

**DATA**

Western blot analysis of TGIF2LY expression in MCF7 (A), Jurkat (B), PC12 (C) whole cell lysates. (Predicted band size: 20 kD; Observed band size: 23 kD)

**STORAGE**

Store at 4°C short term. For long term storage, store at -20°C, avoiding freeze/thaw cycles.

**NOTE**

For Research Use Only. Not for diagnostic, therapeutics, prophylactic or in vivo use.