

DATASHEET

ACC alpha (Phospho-S80) Rabbit Polyclonal Antibody

CAT. NO. APA09090

KEY FEATURES

Target	ACC alpha (Phospho-S80)	Source / Host	Rabbit
Reactivity	Human, Mouse, Rat, Bovine, Pig, Sheep	Clonality	Polyclonal
Applications	WB, IHC	Conjugation	Unconjugated
Form / Buffer	Liquid in 0.42% Potassium phosphate, 0.87% Sodium chloride, pH 7.3, 30% glycerol, and 0.01% sodium azide.		Storage at -20°C

BACKGROUND

Cytosolic enzyme that catalyzes the carboxylation of acetyl-CoA to malonyl-CoA, the first and rate-limiting step of de novo fatty acid biosynthesis. This is a 2 steps reaction starting with the ATP-dependent carboxylation of the biotin carried by the biotin carboxyl carrier (BCC) domain followed by the transfer of the carboxyl group from carboxylated biotin to acetyl-CoA.

APPLICATION

To ensure optimal assay performance, AREX recommends conducting reagent titration tailored to each testing system for optimal detection results.

WB	1:500 - 1:1000
IHC	1:100 - 1:200

*Results are sample-specific. Please refer to your local assay conditions and test parameters for reference.

PRODUCT OVERVIEW

Description	Rabbit polyclonal antibody to ACC alpha (Phospho-S80)
Specificity	Recognizes endogenous levels of ACC alpha protein only when phosphorylated at S80.
Antibody Type	Primary antibody
Immunogen	KLH-conjugated synthetic phosphopeptide corresponding to residues surrounding S80 of human ACC alpha protein. The exact sequence is proprietary.
Purification	The antibody was purified by immunogen affinity chromatography.
Molecular Weight	Predicted: 265 kD; Observed: 280 kD
Form/Buffer	Liquid in 0.42% Potassium phosphate, 0.87% Sodium chloride, pH 7.3, 30% glycerol, and 0.01% sodium azide.
Alternative Names	ACAC; ACC1; ACCA; Acetyl-CoA carboxylase 1; ACC1; ACC-alpha
Gene Symbol	ACACA
Entrez Gene	31(Human); 107476(Mouse); 60581(Rat)
SwissProt	Q13085(Human); Q5SWU9(Mouse); P11497(Rat)

*AREX continuously optimizes our products. Webpage content may not reflect the latest updates. For inquiries, please contact info@arexbio.com or your local distributor.

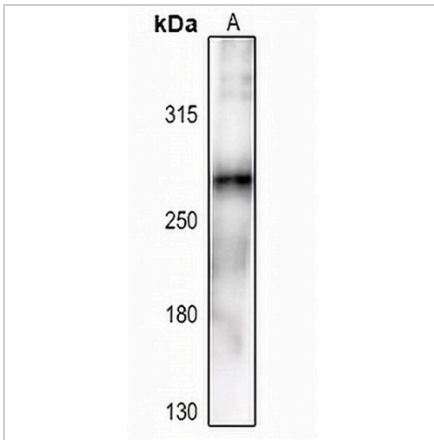
*Clone Number, Reactivity, Source/Host and Clonality can be found in the product name and Key Features section above.

DATASHEET

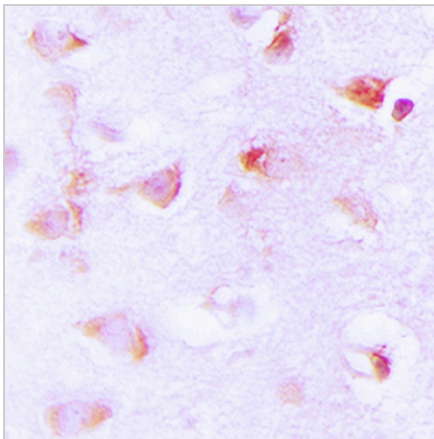
ACC alpha (Phospho-S80) Rabbit Polyclonal Antibody

CAT. NO. APA09090

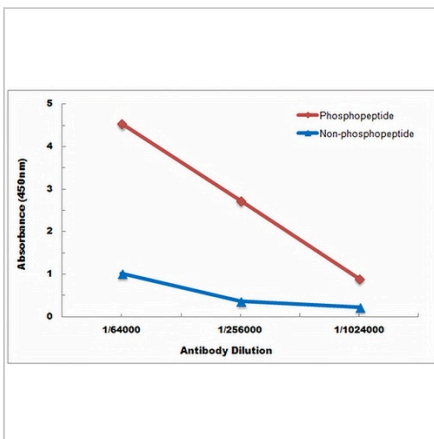
DATA



Western blot analysis of ACC alpha (Phospho-S80) expression in HEK293T (A) whole cell lysates. (Predicted band size: 265 kD; Observed band size: 280 kD)



Immunohistochemical analysis of ACC alpha (Phospho-S80) staining in human brain formalin fixed paraffin embedded tissue section. The section was pre-treated using heat mediated antigen retrieval with sodium citrate buffer (pH 6.0). The section was then incubated with the antibody at room temperature and detected using an HRP conjugated compact polymer system. DAB was used as the chromogen. The section was then counterstained with haematoxylin and mounted with DPX.



Direct ELISA antibody dose-response curve using Anti-ACC alpha (Phospho-S80) Antibody. Antigen (Phosphopeptide and non-phosphopeptide) concentration is 5 ug/ml. Goat Anti-Rabbit IgG (H&L) - HRP was used as the secondary antibody, and signal was developed by TMB substrate.

STORAGE

Store at 4°C short term. For long term storage, store at -20°C, avoiding freeze/thaw cycles.

NOTE

For Research Use Only. Not for diagnostic, therapeutics, prophylactic or in vivo use.