

DATASHEET

ADAM28 Rabbit Polyclonal Antibody

CAT. NO. APA09093

KEY FEATURES

Target	ADAM28	Source / Host	Rabbit
Reactivity	Human, Mouse	Clonality	Polyclonal
Applications	WB	Conjugation	Unconjugated
Form / Buffer	Liquid in 0.42% Potassium phosphate, 0.87% Sodium chloride, pH 7.3, 30% glycerol, and 0.01% sodium azide.		Storage at -20°C

BACKGROUND

May play a role in the adhesive and proteolytic events that occur during lymphocyte emigration or may function in ectodomain shedding of lymphocyte surface target proteins, such as FASL and CD40L. May be involved in sperm maturation.

APPLICATION

To ensure optimal assay performance, AREX recommends conducting reagent titration tailored to each testing system for optimal detection results.

WB	1:500 - 1:1000
----	----------------

*Results are sample-specific. Please refer to your local assay conditions and test parameters for reference.

PRODUCT OVERVIEW

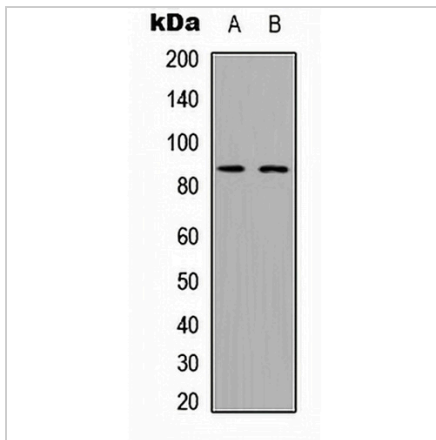
Description	Rabbit polyclonal antibody to ADAM28
Specificity	Recognizes endogenous levels of ADAM28 protein.
Antibody Type	Primary antibody
Immunogen	KLH-conjugated synthetic peptide encompassing a sequence within the center region of human ADAM28. The exact sequence is proprietary.
Purification	The antibody was purified by immunogen affinity chromatography.
Molecular Weight	Predicted: 87 kD; Observed: 90 kD
Form/Buffer	Liquid in 0.42% Potassium phosphate, 0.87% Sodium chloride, pH 7.3, 30% glycerol, and 0.01% sodium azide.
Alternative Names	ADAM23; MDCL; Disintegrin and metalloproteinase domain-containing protein 28; ADAM 28; Epididymal metalloproteinase-like, disintegrin-like, and cysteine-rich protein II; eMDC II; Metalloproteinase-like, disintegrin-like, and cysteine-rich protein L; MDC-L
Gene Symbol	ADAM28
Entrez Gene	10863(Human); 13522(Mouse)
SwissProt	Q9UKQ2(Human); Q9JLN6(Mouse)

*AREX continuously optimizes our products. Webpage content may not reflect the latest updates. For inquiries, please contact info@arexbio.com or your local distributor.

*Clone Number, Reactivity, Source/Host and Clonality can be found in the product name and Key Features section above.

DATASHEET**ADAM28 Rabbit Polyclonal Antibody**

CAT. NO. APA09093

DATA

Western blot analysis of ADAM28 expression in A549 (A), Raw264.7 (B) whole cell lysates. (Predicted band size: 87 kD; Observed band size: 90 kD)

STORAGE

Store at 4°C short term. For long term storage, store at -20°C, avoiding freeze/thaw cycles.

NOTE

For Research Use Only. Not for diagnostic, therapeutics, prophylactic or in vivo use.