

**DATASHEET**

**Alpha-2A Adrenergic Receptor Rabbit Polyclonal Antibody**

CAT. NO. APA09098

**KEY FEATURES**

Target	Alpha-2A Adrenergic Receptor	Source / Host	Rabbit
Reactivity	Human	Clonality	Polyclonal
Applications	WB, IF/ICC	Conjugation	Unconjugated
Form / Buffer	Liquid in 0.42% Potassium phosphate, 0.87% Sodium chloride, pH 7.3, 30% glycerol, and 0.01% sodium azide.		Storage at-20°C

**BACKGROUND**

Alpha-2 adrenergic receptors are G protein-coupled receptors for catecholamines that activate the G(i/o) protein pathway, thereby promoting adenylyl cyclase inhibition, ERK1/2 stimulation, and voltage-gated calcium channels suppression protein pathway, thereby promoting adenylyl cyclase inhibition, ERK1/2 stimulation, and voltage-gated calcium channels suppression . Control a variety of physiological processes, such as regulation of blood pressure, lipolysis and insulin release . ADRA2A and ADRA2C mediates the presynaptic feedback inhibition of neurotransmitter release from noradrenergic nerve terminals in sympathetic and central nervous systems.

**APPLICATION**

To ensure optimal assay performance, AREX recommends conducting reagent titration tailored to each testing system for optimal detection results.

WB	1:500 - 1:1000
IF/ICC	1:50 - 1:200

\*Results are sample-specific. Please refer to your local assay conditions and test parameters for reference.

**PRODUCT OVERVIEW**

Description	Rabbit polyclonal antibody to Alpha-2A Adrenergic Receptor
Specificity	Recognizes endogenous levels of Alpha-2A Adrenergic Receptor protein.
Antibody Type	Primary antibody
Immunogen	KLH-conjugated synthetic peptide encompassing a sequence within the center region of human Alpha-2A Adrenergic Receptor. The exact sequence is proprietary.
Purification	The antibody was purified by immunogen affinity chromatography.
Molecular Weight	Predicted: 50 kD; Observed: 55 kD
Form/Buffer	Liquid in 0.42% Potassium phosphate, 0.87% Sodium chloride, pH 7.3, 30% glycerol, and 0.01% sodium azide.
Alternative Names	ADRA2R; ADRAR; Alpha-2A adrenergic receptor; Alpha-2 adrenergic receptor subtype C10; Alpha-2A adrenoreceptor; Alpha-2A adrenoceptor; Alpha-2AAR
Gene Symbol	ADRA2A
Entrez Gene	150(Human)
SwissProt	P08913(Human)

\*AREX continuously optimizes our products. Webpage content may not reflect the latest updates. For inquiries, please contact [info@arexbio.com](mailto:info@arexbio.com) or your local distributor.

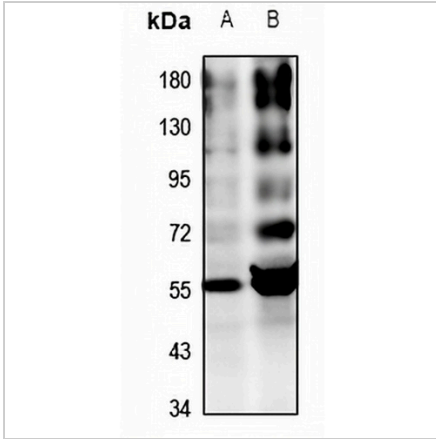
\*Clone Number, Reactivity, Source/Host and Clonality can be found in the product name and Key Features section above.

**DATASHEET**

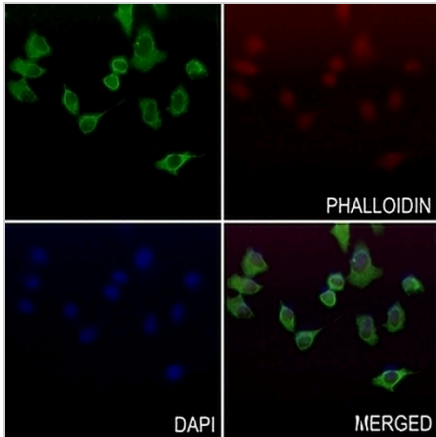
**Alpha-2A Adrenergic Receptor Rabbit Polyclonal Antibody**

CAT. NO. APA09098

**DATA**



Western blot analysis of Alpha-2A Adrenergic Receptor expression in HeLa (A), A2780 (B) whole cell lysates. (Predicted band size: 50 kD; Observed band size: 55 kD)



Immunofluorescent analysis of Alpha-2A Adrenergic Receptor staining in SGC7901 cells. Formalin-fixed cells were permeabilized with 0.1% Triton X-100 in TBS for 5-10 minutes and blocked with 3% BSA-PBS for 30 minutes at room temperature. Cells were probed with the primary antibody in 3% BSA-PBS and incubated overnight at 4 °C in a hidified chamber. Cells were washed with PBST and incubated with a AREX® Fluor 488 - conjugated secondary antibody (green) in PBS at room temperature in the dark. Phalloidin - AREX® Fluor 594 was used to stain Actin filaments (red). DAPI was used to stain the cell nuclei (blue).

**STORAGE**

Store at 4°C short term. For long term storage, store at -20°C, avoiding freeze/thaw cycles.

**NOTE**

For Research Use Only. Not for diagnostic, therapeutics, prophylactic or in vivo use.